

FIP200/RB1CC1 Antibody

Rabbit Polyclonal

Antigen Affinity Purified

Protein ID NP_055596.2

Catalog No. A301-574A

GeneID 9821

Lot No. A301-574A-1



APPLICATIONS	IP
SPECIES REACTIVITY	Human
AMOUNT	100 µl
CONCENTRATION	1000 µg/ml
STORAGE/SHELF LIFE	2 - 8° C / 1 year from date of receipt
PHYSICAL STATE	Liquid
BUFFER	Tris-citrate/phosphate buffer, pH 7 to 8 containing 0.09% Sodium Azide
ISOTYPE	IgG
ORIGIN	USA
PRODUCTION PROCEDURES	Antibody was affinity purified using an epitope specific to FIP200/RB1CC1 immobilized on solid support.

The epitope recognized by A301-574A maps to a region between residue 250 and 300 human 200 kDa FAK family kinase-interacting protein (RB1-inducible coiled-coil 1) using the numbering given in entry NP_055596.2 (GeneID 9821).

Immunoglobulin concentration was determined by extinction coefficient: absorbance at 280 nm of 1.4 equals 1.0 mg of IgG.

APPLICATIONS Centrifuge tube to remove product from lid. Optimal working dilutions should be determined experimentally by the investigator. Prepare working dilution immediately before use.

Western Blot Not recommended. Use rabbit anti-FIP200/RB1CC1 antibody A301-536A.

Immunoprecipitation 2 - 5 µg/mg lysate

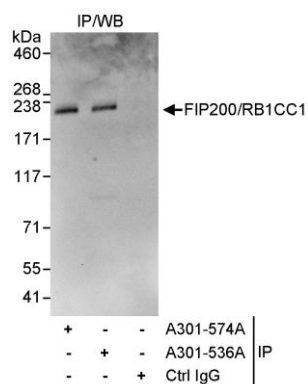
APPLICATION NOTES Western blot of immunoprecipitates performed using Normal Pig Serum (Cat. No. S100-020), Goat anti-Rabbit Light Chain HRP Conjugate (Cat. No. A120-113P) and 4-8% SDS-PAGE (link to IP-western blot protocol in Additional Info section below).

ADDITIONAL INFO <https://www.bethyl.com/product/A301-574A>

Use the link above to view SDS, a current list of citations, and other product specific information.

IP-western blot protocol: https://www.bethyl.com/content/protocol_IP_WB

This document certifies that this product has met all of the quality control standards defined by Bethyl Laboratories, Inc.
Eric McIntush, PhD | Chief Scientific Officer Date: June 21, 2019



Detection of human FIP200/RB1CC1 by western blot of immunoprecipitates. *Samples:* Whole cell lysate (1 mg for IP, 20% of IP loaded) from HeLa cells. *Antibodies:* Affinity purified rabbit anti-FIP200/RB1CC1 antibody A301-574A used for IP at 3 µg/mg lysate. FIP200/RB1CC1 was also immunoprecipitated by rabbit anti-FIP200/RB1CC1 antibody A301-536A, which recognizes a downstream epitope. For blotting immunoprecipitated FIP200/RB1CC1, A301-536A was used at 0.1 µg/ml. *Detection:* Chemiluminescence with an exposure time of 30 seconds.