

STUB1 /CHIP Antibody

Rabbit Polyclonal

Antigen Affinity Purified

Protein ID NP_005852.2

Catalog No. A301-572A

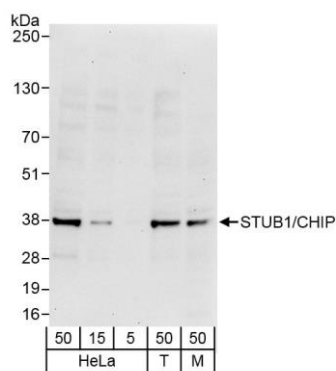
GeneID 10273

Lot No. A301-572A-1

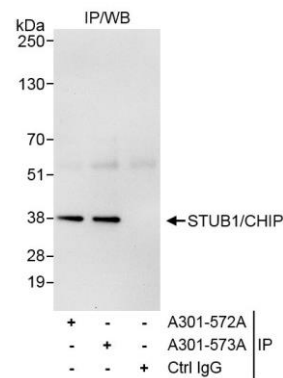


APPLICATIONS	WB, IP
SPECIES REACTIVITY	Human, Mouse
AMOUNT	100 µl
CONCENTRATION	200 µg/ml
STORAGE/SHELF LIFE	2 – 8° C / 1 year from date of receipt
PHYSICAL STATE	Liquid
BUFFER	Tris-buffered Saline containing 0.1% BSA and 0.09% Sodium Azide
ISOTYPE	IgG
ORIGIN	USA
PRODUCTION PROCEDURES	<p>Antibody was affinity purified using an epitope specific to STUB1 /CHIP immobilized on solid support.</p> <p>The epitope recognized by A301-572A maps to a region between residue 1 and 50 of human STIP1 homology and U-box containing protein 1 (carboxy terminus of Hsp70-interacting protein) using the numbering given in entry NP_005852.2 (GeneID 10273).</p> <p>Immunoglobulin concentration was determined by extinction coefficient: absorbance at 280 nm of 1.4 equals 1.0 mg of IgG.</p>
APPLICATIONS	<p>Centrifuge tube to remove product from lid. Optimal working dilutions should be determined experimentally by the investigator. Prepare working dilution immediately before use.</p> <p>Western Blot 1:2,000 – 1:10,000</p> <p>Immunoprecipitation 2 – 5 µg/mg lysate</p>
APPLICATION NOTES	<p>Western blot of immunoprecipitates performed using Normal Pig Serum (Cat. No. S100-020), Goat anti-Rabbit Light Chain HRP Conjugate (Cat. No. A120-113P) and 4-20% SDS-PAGE (link to IP-western blot protocol in Additional Info section below).</p> <p>Western blot of lysates performed using standard western blot reagents and 4-20% SDS-PAGE.</p>
IHC HUMAN CONTROLS	Breast Carcinoma, Colon Carcinoma, Ovarian Carcinoma, Prostate Carcinoma
ADDITIONAL INFO	<p>https://www.bethyl.com/product/A301-572A</p> <p>Use the link above to view SDS, a current list of citations, and other product specific information. IP-western blot protocol https://www.bethyl.com/content/protocol_IP_WB</p>

This document certifies that this product has met all of the quality control standards defined by Bethyl Laboratories, Inc.
Eric McIntush, PhD | Chief Scientific Officer Date: October 18, 2019



Detection of human and mouse STUB1/CHIP by western blot. *Samples:* Whole cell lysate from HeLa (5, 15 and 50 µg), HEK293T (T; 50 µg) and mouse NIH 3T3 (M; 50 µg) cells. *Antibodies:* Affinity purified rabbit anti-STUB1/CHIP antibody A301-572A (lot A301-572A-1) used for WB at 0.04 µg/ml. *Detection:* Chemiluminescence with exposure time of 30 seconds.



Detection of human STUB1/CHIP by western blot of immunoprecipitates. *Samples:* Whole cell lysate (1 mg for IP, 20% of IP loaded) from HeLa cells. *Antibodies:* Affinity purified rabbit anti-STUB1/CHIP antibody A301-572A (lot A301-572A-1) used for IP at 3 µg/mg lysate. STUB1/CHIP was also immunoprecipitated by rabbit anti-STUB1/CHIP antibody A301-573A, which recognizes a downstream epitope. For blotting immunoprecipitated STUB1/CHIP, A301-572A was used at 0.1 µg/ml. *Detection:* Chemiluminescence with exposure time of 30 seconds.