

METTL3/MT-A70 Antibody

Rabbit Polyclonal

Antigen Affinity Purified Protein ID NP_062826.2

Catalog No. A301-567A GeneID 56339

Lot No. A301-567A-3

APPLICATIONS	WB, IP
SPECIES REACTIVITY	Human, Mouse
AMOUNT	100 µl
CONCENTRATION	200 µg/ml
STORAGE/SHELF LIFE	2 – 8°C / 1 year from date of receipt
PHYSICAL STATE	Liquid
BUFFER	Tris-buffered Saline containing 0.1% BSA and 0.09% Sodium Azide
ISOTYPE	IgG
ORIGIN	USA
PRODUCTION PROCEDURES	Antibody was affinity purified using an epitope specific to METTL3/MT-A70 immobilized on solid support.

The epitope recognized by A301-567A maps to a region between residue 1 and 50 of human methyltransferase like 3 (N6-adenosine-methyltransferase 70 kDa subunit) using the numbering given in entry NP_062826.2 (GeneID 56339).

Immunoglobulin concentration was determined by extinction coefficient: absorbance at 280 nm of 1.4 equals 1.0 mg of IgG.

APPLICATIONS Centrifuge tube to remove product from lid. Optimal working dilutions should be determined experimentally by the investigator. Prepare working dilution immediately before use.

Western Blot 1:2,000 – 1:10,000

Immunoprecipitation 2 – 10 µg/mg lysate

IHC HUMAN CONTROLS Breast Carcinoma, Colon Carcinoma, Ovarian Carcinoma, Prostate Carcinoma

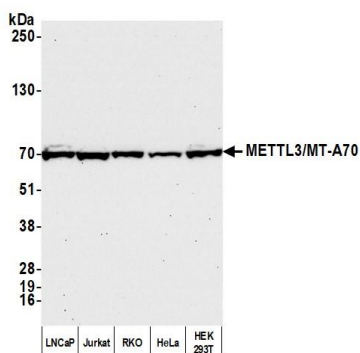
IHC MOUSE CONTROLS Teratoma

ADDITIONAL INFO <https://www.bethyl.com/product/A301-567A>

Use the link above to view SDS, a current list of citations, and other product specific information.

IP-western blot protocol: https://www.bethyl.com/content/protocol_IP_WB

This document certifies that this product has met all of the quality control standards defined by Bethyl Laboratories, Inc.
Michael Spencer, PhD Date: March 8, 2022

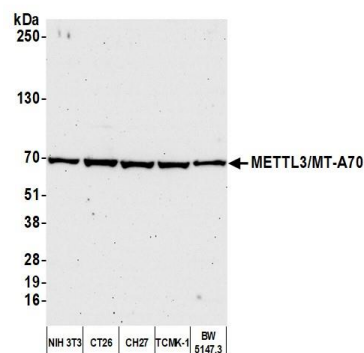


Detection of human METTL3/MT-A70 by western blot.

Samples: Whole cell lysate (50 µg) from LNCaP, Jurkat, RKO, HeLa, and HEK293T cells prepared using NETN lysis buffer.

Antibody: Affinity purified rabbit anti-METTL3/MT-A70 antibody (A301-567A lot 3) used for WB at 0.04 µg/ml.

Detection: Chemiluminescence with an exposure time of 30 seconds.

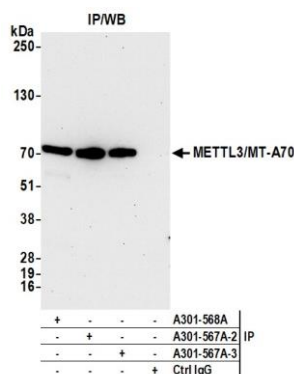


Detection of mouse METTL3/MT-A70 by western blot.

Samples: Whole cell lysate (50 µg) from NIH 3T3, CT26, CH27, TCMK-1, and BW5147.3 cells prepared using NETN lysis buffer.

Antibody: Affinity purified rabbit anti-METTL3/MT-A70 antibody (A301-567A lot 3) used for WB at 0.04 µg/ml.

Detection: Chemiluminescence with an exposure time of 75 seconds.



Detection of human METTL3/MT-A70 by western blot of immunoprecipitates.

Samples: Whole cell lysate (1.0 mg per IP reaction; 5% of IP loaded) from HeLa cells prepared using NETN lysis buffer. *Antibodies:* Affinity purified rabbit anti-METTL3/MT-A70 antibody (A301-567A lot 3) used for IP at 6 µg per reaction. METTL3/MT-A70 was also immunoprecipitated by a previous lot of this antibody (A301-567A lot 2) and a second antibody against a different epitope of METTL3/MT-A70 (A301-568A). For blotting immunoprecipitated METTL3/MT-A70, A301-567A was used at 0.04 µg/ml. *Detection:* Chemiluminescence with an exposure time of 30 seconds.