

PIP1 /WDR84 Antibody

Rabbit Polyclonal

Antigen Affinity Purified

Protein ID NP_060376.2

Catalog No. A301-549A

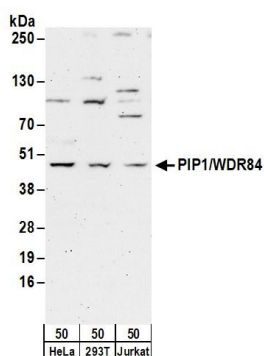
GeneID 55003

Lot No. A301-549A-2



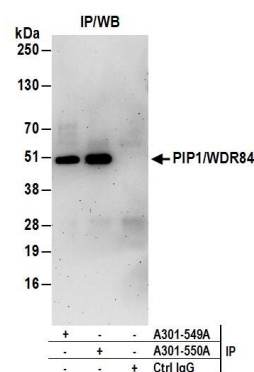
APPLICATIONS	WB, IP
SPECIES REACTIVITY	Human
AMOUNT	100 µl
CONCENTRATION	1000 µg/ml
STORAGE/SHELF LIFE	2 - 8° C / 1 year from date of receipt
PHYSICAL STATE	Liquid
BUFFER	Tris-citrate/phosphate buffer, pH 7 to 8 containing 0.09% Sodium Azide
ISOTYPE	IgG
ORIGIN	USA
PRODUCTION PROCEDURES	Antibody was affinity purified using an epitope specific to PIP1 /WDR84 immobilized on solid support. The epitope recognized by A301-549A maps to a region between residue 290 and 340 of human PAK/PLC-interacting protein 1 (WD repeat protein 84) using the numbering given in entry NP_060376.2 (GeneID 55003). Immunoglobulin concentration was determined by extinction coefficient: absorbance at 280 nm of 1.4 equals 1.0 mg of IgG.
APPLICATIONS	Centrifuge tube to remove product from lid. Optimal working dilutions should be determined experimentally by the investigator. Prepare working dilution immediately before use. Western Blot 1:1,000 - 1:5,000 Immunoprecipitation 2 - 5 µg/mg lysate
APPLICATION NOTES	Western blot of immunoprecipitates performed using Normal Pig Serum (Cat. No. S100-020), Goat anti-Rabbit Light Chain HRP Conjugate (Cat. No. A120-113P) and 4-20% SDS-PAGE (link to IP-western blot protocol in Additional Info section below). Western blot of lysates performed using standard western blot reagents and 4-20% SDS-PAGE.
ADDITIONAL INFO	https://www.bethyl.com/product/A301-549A Use the link above to view SDS, a current list of citations, and other product specific information. IP-western blot protocol: https://www.bethyl.com/content/protocol_IP_WB

This document certifies that this product has met all of the quality control standards defined by Bethyl Laboratories, Inc.
Eric McIntush, PhD | Chief Scientific Officer Date: June 21, 2019



Detection of human PIP1/WDR84 by western blot.

Samples: Whole cell lysate (50 µg) from HeLa, HEK293T, and Jurkat cells. *Antibodies:* Affinity purified rabbit anti-PIP1/WDR84 antibody A301-549A (lot A301-549A-2) used for WB at 0.4 µg/ml. *Detection:* Chemiluminescence with an exposure time of 3 minutes.



Detection of human PIP1/WDR84 by western blot of immunoprecipitates.

Samples: Whole cell lysate (1 mg for IP; 20% of IP loaded) from HeLa cells. *Antibodies:* Affinity purified rabbit anti-PIP1/WDR84 antibody A301-549A (lot A301-549A-2) used for IP at 6 µg/mg lysate. PIP1/WDR84 was also immunoprecipitated by rabbit anti-PIP1/WDR84 antibody A301-550A. For blotting immunoprecipitated PIP1/WDR84, A301-549A was used at 0.2 µg/ml. *Detection:* Chemiluminescence with an exposure time of 3 minutes.