

# ZNF318/TZF Antibody

Rabbit Polyclonal

Antigen Affinity Purified

Protein ID AAD17298.1

Catalog No. A301-546A

GeneID 24149

Lot No. A301-546A-1



<b>APPLICATIONS</b>	WB, IP, IHC
<b>SPECIES REACTIVITY</b>	Human
<b>AMOUNT</b>	100 µl
<b>CONCENTRATION</b>	1000 µg/ml
<b>STORAGE/SHELF LIFE</b>	2 - 8° C / 1 year from date of receipt
<b>PHYSICAL STATE</b>	Liquid
<b>BUFFER</b>	Tris-citrate/phosphate buffer, pH 7 to 8 containing 0.09% Sodium Azide
<b>ISOTYPE</b>	IgG
<b>ORIGIN</b>	USA
<b>PRODUCTION PROCEDURES</b>	Antibody was affinity purified using an epitope specific to ZNF318/TZF immobilized on solid support.

The epitope recognized by A301-546A maps to a region between residue 2049 and 2099 of human zinc finger protein 318 (testicular zinc finger) using the numbering given in entry AAD17298.1 (GeneID 24149).

Immunoglobulin concentration was determined by extinction coefficient: absorbance at 280 nm of 1.4 equals 1.0 mg of IgG.

**APPLICATIONS** Centrifuge tube to remove product from lid. Optimal working dilutions should be determined experimentally by the investigator. Prepare working dilution immediately before use.

Western Blot 1:2,000 - 1:10,000

Immunoprecipitation 2 - 5 µg/mg lysate

Immunohistochemistry 1:500 - 1:2,000. Epitope retrieval with citrate buffer pH 6.0 is recommended for FFPE tissue sections.

**APPLICATION NOTES** Western blot of immunoprecipitates performed using Normal Pig Serum (Cat. No. S100-020), Goat anti-Rabbit Light Chain HRP Conjugate (Cat. No. A120-113P) and 4-8% SDS-PAGE (link to IP-western blot protocol in Additional Info section below).

Western blot of lysates performed using standard western blot reagents and 4-8% SDS-PAGE.

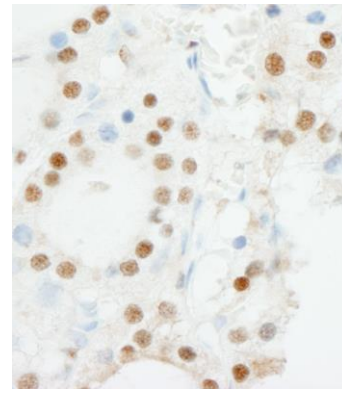
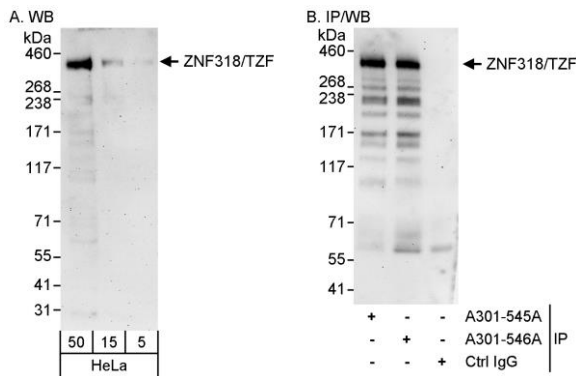
**IHC HUMAN CONTROLS** Anaplastic Thyroid Carcinoma, Breast Carcinoma, Ovarian Carcinoma, Testicular Seminoma

**ADDITIONAL INFO** <https://www.bethyl.com/product/A301-546A>

Use the link above to view SDS, a current list of citations, and other product specific information.

IP-western blot protocol: [https://www.bethyl.com/content/protocol\\_IP\\_WB](https://www.bethyl.com/content/protocol_IP_WB)

This document certifies that this product has met all of the quality control standards defined by Bethyl Laboratories, Inc.  
Eric McIntush, PhD | Chief Scientific Officer Date: June 21, 2019



**Detection of human ZNF318/TZF by western blot and immunoprecipitation.** *Samples:* Whole cell lysate (5, 15 and 50  $\mu\text{g}$  for WB; 1 mg for IP, 20% of IP loaded) from HeLa cells. *Antibodies:* Affinity purified rabbit anti-ZNF318/TZF antibody A301-546A used for WB at 0.4  $\mu\text{g}/\text{ml}$  (A) and 1  $\mu\text{g}/\text{ml}$  (B) and used for IP at 3  $\mu\text{g}/\text{mg}$  lysate. ZNF318/TZF was also immunoprecipitated by rabbit anti-ZNF318/TZF antibody A301-545A, which recognizes an upstream epitope. *Detection:* Chemiluminescence with exposure times of 3 minutes (A and B).

**Detection of human ZNF318/TZF by immunohistochemistry.** *Sample:* FFPE section of human thyroid carcinoma. *Antibody:* Affinity purified rabbit anti-ZNF318/TZF (Cat. No. A301-546A Lot1) used at a dilution of 1:1,000 (1  $\mu\text{g}/\text{ml}$ ). *Detection:* DAB