

ZFP106 Antibody

Rabbit Polyclonal

Antigen Affinity Purified

Protein ID NP_071918.1

Catalog No. A301-527A

GeneID 64397

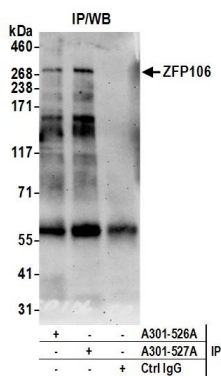
Lot No. A301-527A-2



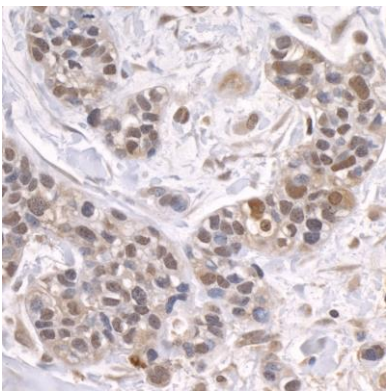
APPLICATIONS	IP, IHC						
SPECIES REACTIVITY	Human						
PRESUMED REACTIVITY	Based on 100% sequence identity, this antibody is predicted to react with Mouse						
AMOUNT	100 µl						
CONCENTRATION	1000 µg/ml						
STORAGE/SHELF LIFE	2 – 8° C / 1 year from date of receipt						
PHYSICAL STATE	Liquid						
BUFFER	Tris-buffered Saline containing 0.1% BSA and 0.09% Sodium Azide						
ISOTYPE	IgG						
ORIGIN	USA						
PRODUCTION PROCEDURES	<p>Antibody was affinity purified using an epitope specific to ZFP106 immobilized on solid support.</p> <p>The epitope recognized by A301-527A maps to a region between residue 1833 and 1883 of human zinc finger protein 106 using the numbering given in entry NP_071918.1 (GeneID 64397).</p> <p>Immunoglobulin concentration was determined by extinction coefficient: absorbance at 280 nm of 1.4 equals 1.0 mg of IgG.</p>						
APPLICATIONS	<p>Centrifuge tube to remove product from lid. Optimal working dilutions should be determined experimentally by the investigator. Prepare working dilution immediately before use.</p> <table><tr><td>Western Blot</td><td>Not recommended. Use rabbit anti-ZFP106 antibody A301-526A.</td></tr><tr><td>Immunoprecipitation</td><td>2 – 10 µg/mg lysate</td></tr><tr><td>Immunohistochemistry</td><td>1:500 – 1:2,000. Epitope retrieval with citrate buffer pH 6.0 is recommended for FFPE tissue sections.</td></tr></table>	Western Blot	Not recommended. Use rabbit anti-ZFP106 antibody A301-526A.	Immunoprecipitation	2 – 10 µg/mg lysate	Immunohistochemistry	1:500 – 1:2,000. Epitope retrieval with citrate buffer pH 6.0 is recommended for FFPE tissue sections.
Western Blot	Not recommended. Use rabbit anti-ZFP106 antibody A301-526A.						
Immunoprecipitation	2 – 10 µg/mg lysate						
Immunohistochemistry	1:500 – 1:2,000. Epitope retrieval with citrate buffer pH 6.0 is recommended for FFPE tissue sections.						
APPLICATION NOTES	Western blot of immunoprecipitates performed using Normal Pig Serum (Cat. No. S100-020), Goat anti-Rabbit Light Chain HRP Conjugate (Cat. No. A120-113P) and 4-8% SDS-PAGE (link to IP-western blot protocol in Additional Info section below).						
IHC HUMAN CONTROLS	Breast Carcinoma, Pancreatic Islet Cell Tumor, Prostate Carcinoma						
ADDITIONAL INFO	<p>https://www.bethyl.com/product/A301-527A</p> <p>Use the link above to view SDS, a current list of citations, and other product specific information.</p> <p>IP-western blot protocol: https://www.bethyl.com/content/protocol_IP_WB</p>						

This document certifies that this product has met all of the quality control standards defined by Bethyl Laboratories, Inc.
Eric McIntush, PhD | Chief Scientific Officer

Date: June 21, 2019



Detection of human ZFP106 by western blot of immunoprecipitates. *Samples:* Nuclear Extract (0.5 or 1.0 mg per IP reaction; 20% of IP loaded) from HEK293T cells. *Antibodies:* Affinity purified rabbit anti-ZFP106 antibody A301-527A (lot A301-527A-2) used for IP at 6 µg per reaction. ZFP106 was also immunoprecipitated by rabbit anti-ZFP106 antibody A301-526A. For blotting immunoprecipitated ZFP106, A301-527A was used at 1 µg/ml. *Detection:* Chemiluminescence with an exposure time of 75 seconds.



Detection of human ZFP106 by immunohistochemistry. *Sample:* FFPE section of human breast carcinoma. *Antibody:* Affinity purified rabbit anti- ZFP106 (Cat. No. A301-527A Lot2) used at a dilution of 1:1,000 (1 µg/ml). *Detection:* DAB