

NUCKS Antibody

Rabbit Polyclonal

Antigen Affinity Purified

Protein ID NP_073568.2

Catalog No. A301-507A

GeneID 64710

Lot No. A301-507A-1



| | |
|------------------------------|---|
| APPLICATIONS | IP, IHC |
| SPECIES REACTIVITY | Human |
| AMOUNT | 100 µl |
| CONCENTRATION | 1000 µg/ml |
| STORAGE/SHELF LIFE | 2 – 8° C / 1 year from date of receipt |
| PHYSICAL STATE | Liquid |
| BUFFER | Tris-citrate/phosphate buffer, pH 7 to 8 containing 0.09% Sodium Azide |
| ISOTYPE | IgG |
| ORIGIN | USA |
| PRODUCTION PROCEDURES | Antibody was affinity purified using an epitope specific to NUCKS immobilized on solid support. |

The epitope recognized by A301-507A maps to a region between residue 1 and 50 of human nuclear ubiquitous casein kinase and cyclin-dependent kinase substrate using the numbering given in entry NP_073568.2 (GeneID 64710).

Immunoglobulin concentration was determined by extinction coefficient: absorbance at 280 nm of 1.4 equals 1.0 mg of IgG.

APPLICATIONS Centrifuge tube to remove product from lid. Optimal working dilutions should be determined experimentally by the investigator. Prepare working dilution immediately before use.

Western Blot Not recommended

Immunoprecipitation 2 – 5 µg/mg lysate

Immunohistochemistry 1:500 – 1:2,000. Epitope retrieval with citrate buffer pH 6.0 is recommended for FFPE tissue sections.

APPLICATION NOTES Western blot of immunoprecipitates performed using Normal Pig Serum (Cat. No. S100-020), Goat anti-Rabbit Light Chain HRP Conjugate (Cat. No. A120-113P) and 4-20% SDS-PAGE (link to IP-western blot protocol in Additional Info section below).

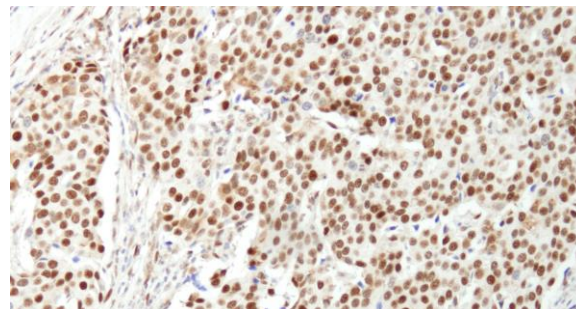
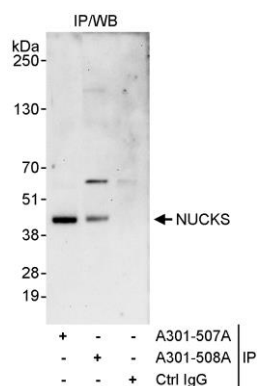
IHC HUMAN CONTROLS Breast Carcinoma, Colon Carcinoma, Ovarian Carcinoma, Prostate Carcinoma

IHC MOUSE CONTROLS Colon Carcinoma CT26, Renal Cell Carcinoma, Teratoma

ADDITIONAL INFO <https://www.bethyl.com/product/A301-507A>

Use the link above to view SDS, a current list of citations, and other product specific information. IP-western blot protocol: https://www.bethyl.com/content/protocol_IP_WB

This document certifies that this product has met all of the quality control standards defined by Bethyl Laboratories, Inc.
Eric McIntush, PhD | Chief Scientific Officer Date: June 21, 2019



Detection of human NUCKS by western blot of immunoprecipitates. *Samples:* Whole cell lysate (1 mg for IP, 20% of IP loaded) from HeLa cells. *Antibodies:* Affinity purified rabbit anti-NUCKS antibody A301-507A used for IP at 3 $\mu\text{g}/\text{mg}$ lysate. NUCKS was also immunoprecipitated by rabbit anti-NUCKS antibody A301-508A, which recognizes a downstream epitope. For blotting immunoprecipitated NUCKS, A301-508A was used at 1 $\mu\text{g}/\text{ml}$. *Detection:* Chemiluminescence with an exposure time of 30 seconds.

Detection of human NUCKS by immunohistochemistry. *Sample:* FFPE section of human breast carcinoma. *Antibody:* Affinity purified rabbit anti-NUCKS (Cat. No. A301-507A Lot1) used at a dilution of 1:1,000 (1 $\mu\text{g}/\text{ml}$). *Detection:* DAB