

# CIZ1 Antibody

Rabbit Polyclonal

Antigen Affinity Purified	RefSeq ID	NP_036259.2
Catalog No. A301-497A	Uniprot ID	Q9ULV3
Lot No. 2	GeneID	25792

---

<b>APPLICATIONS</b>	WB, IP
<b>SPECIES REACTIVITY</b>	Human
<b>AMOUNT</b>	100 µl
<b>CONCENTRATION</b>	1000 µg/ml
<b>STORAGE/SHELF LIFE</b>	2 – 8°C / 1 year from date of receipt
<b>PHYSICAL STATE</b>	Liquid
<b>BUFFER</b>	Tris-citrate/phosphate buffer, pH 7 to 8 containing 0.09% Sodium Azide
<b>ISOTYPE</b>	IgG
<b>ORIGIN</b>	USA
<b>PRODUCTION PROCEDURES</b>	Antibody was affinity purified using an epitope specific to CIZ1 immobilized on solid support.

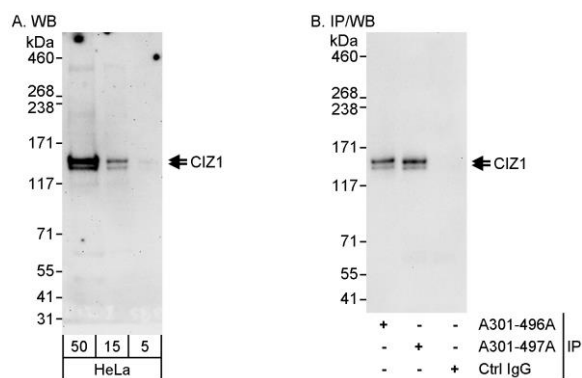
The epitope recognized by A301-497A maps to a region between residue 848 and 898 of human CDKN1A interacting zinc finger protein 1 using the numbering given in entry NP\_036259.2 (GeneID 25792).

Immunoglobulin concentration was determined using Beer's Law where 1 mg/mL IgG has an A280 of 1.4.

<b>APPLICATIONS</b>	Centrifuge tube to remove product from lid. Optimal working dilutions should be determined experimentally by the investigator. Prepare working dilution immediately before use.
	Western Blot                      1:2000 – 1:10,000
	Immunoprecipitation          6 µg/mg lysate

<b>ADDITIONAL INFO</b>	<a href="https://www.fortislife.com/p/A301-497A">https://www.fortislife.com/p/A301-497A</a> Use the link above to view SDS, a current list of citations, and other product specific information.
------------------------	---

This document certifies that this product has met all of the quality control standards defined by Bethyl Laboratories, Inc.  
Michael Spencer, PhD Date: August 19, 2024



**Detection of human CIZ1 by western blot and immunoprecipitation.** *Samples:* Whole cell lysate (5, 15 and 50 µg for WB; 1 mg for IP, 20% of IP loaded) from HeLa cells. *Antibodies:* Affinity purified rabbit anti-CIZ1 antibody A301-497A used for WB at 0.1 µg/ml (A) and 1 µg/ml (B) and used for IP at 3 µg/mg lysate. CIZ1 was also immunoprecipitated by rabbit anti-CIZ1 antibody A301-496A, which recognizes an upstream epitope. *Detection:* Chemiluminescence with exposure times of 3 minutes (A) and 10 seconds (B).