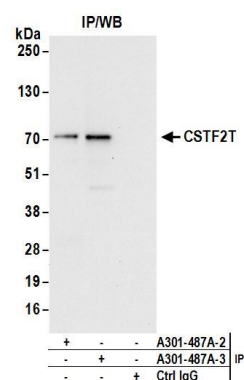
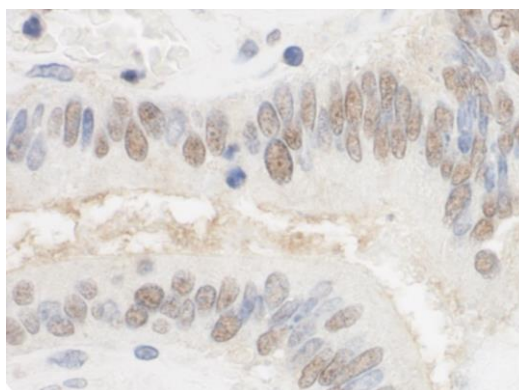


Detection of human CSTF2T by western blot. *Samples:* Whole cell lysate from HeLa (15 and 50 μg), HEK293T (50 μg), and Jurkat (50 μg) cells. *Antibodies:* Affinity purified rabbit anti-CSTF2T antibody A301-487A (lot A301-487A-3) used for WB at 0.4 $\mu\text{g}/\text{ml}$. *Detection:* Chemiluminescence with an exposure time of 30 seconds.



Detection of human CSTF2T by western blot of immunoprecipitates. *Samples:* Whole cell lysate (1 mg for IP; 20% of IP loaded) from HeLa cells. *Antibodies:* Affinity purified rabbit anti-CSTF2T antibody A301-487A (lot A301-487A-3) used for IP at 6 $\mu\text{g}/\text{mg}$ lysate. CSTF2T was also immunoprecipitated by a prior lot (A301-487A-2) of this antibody. For blotting immunoprecipitated CSTF2T, A301-487A was used at 1 $\mu\text{g}/\text{ml}$. *Detection:* Chemiluminescence with an exposure time of 10 seconds.



Detection of human CSTF2T/TauCSTF64 by immunohistochemistry. *Sample:* FFPE section of human colon carcinoma. *Antibody:* Affinity purified rabbit anti-CSTF2T/TauCSTF64 (Cat. No. A301-487A Lot3) used at a dilution of 1:1,000 (1 $\mu\text{g}/\text{ml}$). *Detection:* DAB