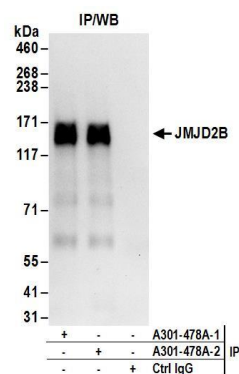
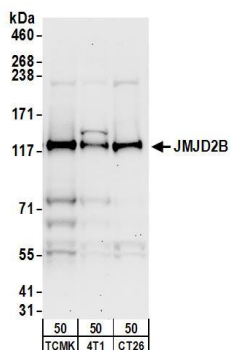


**Detection of human JMJD2B by western blot.** *Samples:* Whole cell lysate (50 µg) from HeLa, HEK293T, and Jurkat cells. *Antibodies:* Affinity purified rabbit anti-JMJD2B antibody A301-478A (lot A301-478A-2) used for WB at 0.1 µg/ml. *Detection:* Chemiluminescence with an exposure time of 30 seconds.



**Detection of human JMJD2B by western blot of immunoprecipitates.** *Samples:* Whole cell lysate (1 mg for IP; 20% of IP loaded) from HeLa cells. *Antibodies:* Affinity purified rabbit anti-JMJD2B antibody A301-478A (lot A301-478A-2) used for IP at 6 µg/mg lysate. JMJD2B was also immunoprecipitated by a previous lot (lot A301-478A-1) of this antibody. For blotting immunoprecipitated JMJD2B, A301-478A-2 was used at 1 µg/ml. *Detection:* Chemiluminescence with an exposure time of 10 seconds.



**Detection of mouse JMJD2B by western blot.** *Samples:* Whole cell lysate (50 µg) from TCMK-1, 4T1, and CT26.WT cells. *Antibodies:* Affinity purified rabbit anti-JMJD2B antibody A301-478A (lot A301-478A-2) used for WB at 0.5 µg/ml. *Detection:* Chemiluminescence with an exposure time of 30 seconds.