

# JHDM1A Antibody

Rabbit Polyclonal

Antigen Affinity Purified

Protein ID NP\_036440.1

Catalog No. A301-475A

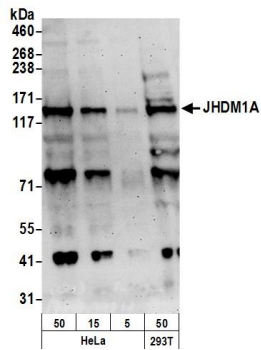
GeneID 22992

Lot No. A301-475A-2

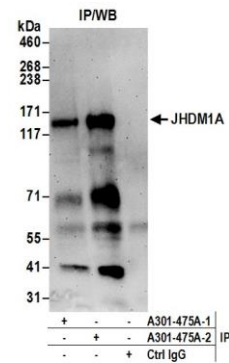


<b>APPLICATIONS</b>	WB, IP, IHC
<b>SPECIES REACTIVITY</b>	Human
<b>AMOUNT</b>	100 µl
<b>CONCENTRATION</b>	200 µg/ml
<b>STORAGE/SHELF LIFE</b>	2 – 8° C / 1 year from date of receipt
<b>PHYSICAL STATE</b>	Liquid
<b>BUFFER</b>	Tris-buffered Saline containing 0.1% BSA and 0.09% Sodium Azide
<b>ISOTYPE</b>	IgG
<b>ORIGIN</b>	USA
<b>PRODUCTION PROCEDURES</b>	<p>Antibody was affinity purified using an epitope specific to JHDM1A immobilized on solid support.</p> <p>The epitope recognized by A301-475A maps to a region between residue 825 and 875 of human JmJc domain-containing histone demethylation protein 1A using the numbering given in entry NP_036440.1 (GeneID 22992).</p> <p>Immunoglobulin concentration was determined by extinction coefficient: absorbance at 280 nm of 1.4 equals 1.0 mg of IgG.</p>
<b>APPLICATIONS</b>	<p>Centrifuge tube to remove product from lid. Optimal working dilutions should be determined experimentally by the investigator. Prepare working dilution immediately before use.</p> <p>Western Blot 1:2,000 – 1:10,000</p> <p>Immunoprecipitation 2 – 10 µg/mg lysate</p> <p>Immunohistochemistry 1:100 – 1:500. Epitope retrieval with citrate buffer pH 6.0 is recommended for FFPE tissue sections.</p>
<b>APPLICATION NOTES</b>	Western blot of immunoprecipitates performed using Normal Pig Serum (Cat. No. S100-020), Goat anti-Rabbit Light Chain HRP Conjugate (Cat. No. A120-113P) and 4-8% SDS-PAGE (link to IP-western blot protocol in Additional Info section below).
<b>IHC HUMAN CONTROLS</b>	Western blot of lysates performed using standard western blot reagents and 4-8% SDS-PAGE. Breast Carcinoma, Ovarian Carcinoma, Skin Basal Cell Carcinoma, Stomach Adenocarcinoma
<b>ADDITIONAL INFO</b>	<p><a href="https://www.bethyl.com/product/A301-475A">https://www.bethyl.com/product/A301-475A</a></p> <p>Use the link above to view SDS, a current list of citations, and other product specific information.</p> <p>IP-western blot protocol: <a href="https://www.bethyl.com/content/protocol_IP_WB">https://www.bethyl.com/content/protocol_IP_WB</a></p>

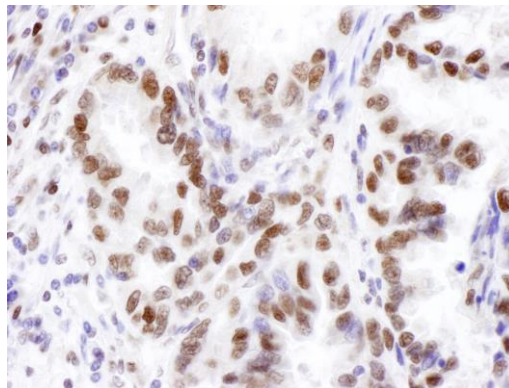
This document certifies that this product has met all of the quality control standards defined by Bethyl Laboratories, Inc.  
Eric McIntush, PhD | Chief Scientific Officer Date: June 21, 2019



**Detection of human JHDM1A by western blot.** *Samples:* Whole cell lysate from HeLa (50, 15, 5 µg) and HEK293T (50 µg) cells prepared using NETN lysis buffer. *Antibodies:* Affinity purified rabbit anti-JHDM1A antibody A301-475A (lot A301-475A-2) used for WB at 0.1 µg/ml. *Detection:* Chemiluminescence with an exposure time of 3 minutes.



**Detection of human JHDM1A by western blot of immunoprecipitates.** *Samples:* Whole cell lysate (0.5 or 1.0 mg per IP reaction; 20% of IP loaded) from HeLa cells prepared using NETN lysis buffer. *Antibodies:* Affinity purified rabbit anti-JHDM1A antibody A301-475A (lot A301-475A-2) used for IP at 6 µg per reaction. JHDM1A was also immunoprecipitated by a previous lot of this antibody (lot A301-475A-1). For blotting immunoprecipitated JHDM1A, A301-475A was used at 0.4 µg/ml. *Detection:* Chemiluminescence with an exposure time of 3 minutes.



**Detection of human JHDM1A by immunohistochemistry.** *Sample:* FFPE section of human lung cancer. *Antibody:* Affinity purified rabbit anti-JHDM1A (Cat. No. A301-475A Lot2) used at a dilution of 1:1,000 (1 µg/ml). *Detection:* DAB