

# KIAA0528 Antibody

Rabbit Polyclonal

Antigen Affinity Purified

Protein ID NP\_055617.1

Catalog No. A301-469A

GeneID 9847

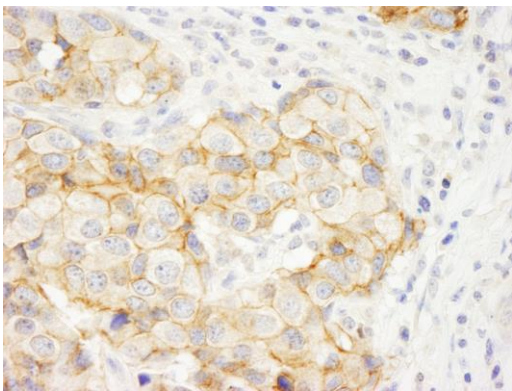
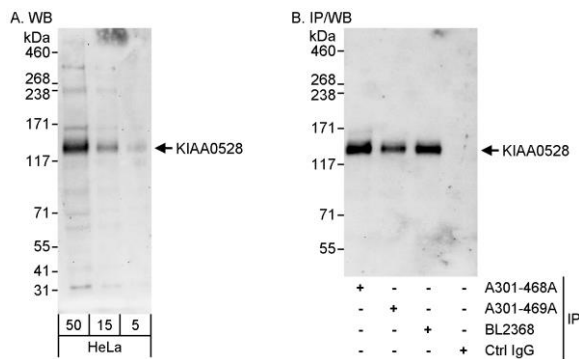
Lot No. A301-469A-1



<b>APPLICATIONS</b>	WB, IP, IHC						
<b>SPECIES REACTIVITY</b>	Human, Mouse						
<b>PRESUMED REACTIVITY</b>	Based on 100% sequence identity, this antibody is predicted to react with X. tropicalis and Orangutan						
<b>AMOUNT</b>	100 µl						
<b>CONCENTRATION</b>	1000 µg/ml						
<b>STORAGE/SHELF LIFE</b>	2 – 8° C / 1 year from date of receipt						
<b>PHYSICAL STATE</b>	Liquid						
<b>BUFFER</b>	Tris-citrate/phosphate buffer, pH 7 to 8 containing 0.09% Sodium Azide						
<b>ISOTYPE</b>	IgG						
<b>ORIGIN</b>	USA						
<b>PRODUCTION PROCEDURES</b>	<p>Antibody was affinity purified using an epitope specific to KIAA0528 immobilized on solid support.</p> <p>The epitope recognized by A301-469A maps to a region between residue 375 and 425 of human KIAA0528 using the numbering given in entry NP_055617.1 (GeneID 9847).</p> <p>Immunoglobulin concentration was determined by extinction coefficient: absorbance at 280 nm of 1.4 equals 1.0 mg of IgG.</p>						
<b>APPLICATIONS</b>	<p>Centrifuge tube to remove product from lid. Optimal working dilutions should be determined experimentally by the investigator. Prepare working dilution immediately before use.</p> <table><tr><td>Western Blot</td><td>1:2,000 – 1:10,000</td></tr><tr><td>Immunoprecipitation</td><td>2 – 5 µg/mg lysate</td></tr><tr><td>Immunohistochemistry</td><td>1:500 – 1:2,000. Epitope retrieval with citrate buffer pH 6.0 is recommended for FFPE tissue sections. For mouse tissues: 1:200 – 1:800. Epitope retrieval with Tris-EDTA pH 9.0 is recommended for FFPE tissue sections.</td></tr></table>	Western Blot	1:2,000 – 1:10,000	Immunoprecipitation	2 – 5 µg/mg lysate	Immunohistochemistry	1:500 – 1:2,000. Epitope retrieval with citrate buffer pH 6.0 is recommended for FFPE tissue sections. For mouse tissues: 1:200 – 1:800. Epitope retrieval with Tris-EDTA pH 9.0 is recommended for FFPE tissue sections.
Western Blot	1:2,000 – 1:10,000						
Immunoprecipitation	2 – 5 µg/mg lysate						
Immunohistochemistry	1:500 – 1:2,000. Epitope retrieval with citrate buffer pH 6.0 is recommended for FFPE tissue sections. For mouse tissues: 1:200 – 1:800. Epitope retrieval with Tris-EDTA pH 9.0 is recommended for FFPE tissue sections.						
<b>APPLICATION NOTES</b>	<p>Western blot of immunoprecipitates performed using Normal Pig Serum (Cat. No. S100-020), Goat anti-Rabbit Light Chain HRP Conjugate (Cat. No. A120-113P) and 4-8% SDS-PAGE (link to IP-western blot protocol in Additional Info section below).</p> <p>Western blot of lysates performed using standard western blot reagents and 4-8% SDS-PAGE.</p>						
<b>IHC HUMAN CONTROLS</b>	Breast Carcinoma, Prostate Carcinoma						
<b>IHC MOUSE CONTROLS</b>	Intestine						
<b>ADDITIONAL INFO</b>	<p><a href="https://www.bethyl.com/product/A301-469A">https://www.bethyl.com/product/A301-469A</a></p> <p>Use the link above to view SDS, a current list of citations, and other product specific information.</p> <p>IP-western blot protocol: <a href="https://www.bethyl.com/content/protocol_IP_WB">https://www.bethyl.com/content/protocol_IP_WB</a></p>						

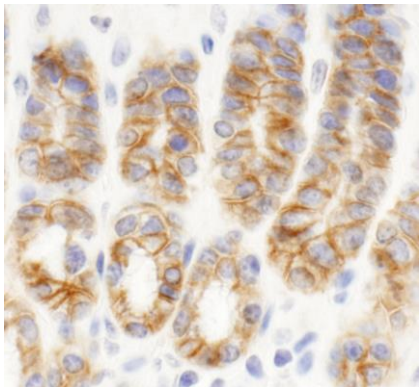
This document certifies that this product has met all of the quality control standards defined by Bethyl Laboratories, Inc.  
Eric McIntush, PhD | Chief Scientific Officer

Date: June 21, 2019



**Detection of human KIAA0528 by western blot and immunoprecipitation.** *Samples:* Whole cell lysate (5, 15 and 50 µg for WB; 1 mg for IP, 20% of IP loaded) from HeLa cells. *Antibodies:* Affinity purified rabbit anti-KIAA0528 antibody A301-469A used for WB at 0.4 µg/ml (A) and 1 µg/ml (B) and used for IP at 3 µg/mg lysate. KIAA0528 was also immunoprecipitated by rabbit anti-KIAA0528 antibodies A301-468A and BL2368, which recognize other epitopes. *Detection:* Chemiluminescence with exposure times of 3 minutes (A) and 30 seconds (B).

**Detection of human KIAA0528 by immunohistochemistry.** *Sample:* FFPE section of human breast carcinoma. *Antibody:* Affinity purified rabbit anti-KIAA0528 (Cat. No. A301-469A Lot1) used at a dilution of 1:1,000 (1 µg/ml). *Detection:* DAB



**Detection of mouse KIAA0528 by immunohistochemistry.** *Sample:* FFPE section of mouse intestine. *Antibody:* Affinity purified rabbit anti-KIAA0528 (Cat. No. A301-469A Lot1) used at a dilution of 1:400 (2.5µg/ml). *Detection:* DAB