

KIAA0528 Antibody

Rabbit Polyclonal

Antigen Affinity Purified

Protein ID NP_055617.1

Catalog No. A301-468A

GeneID 9847

Lot No. A301-468A-1



APPLICATIONS	IP
SPECIES REACTIVITY	Human
PRESUMED REACTIVITY	Based on 100% sequence identity, this antibody is predicted to react with Mouse and Orangutan
AMOUNT	100 µl
CONCENTRATION	1000 µg/ml
STORAGE/SHELF LIFE	2 - 8° C / 1 year from date of receipt
PHYSICAL STATE	Liquid
BUFFER	Tris-citrate/phosphate buffer, pH 7 to 8 containing 0.09% Sodium Azide
ISOTYPE	IgG
ORIGIN	USA
PRODUCTION PROCEDURES	Antibody was affinity purified using an epitope specific to KIAA0528 immobilized on solid support.

The epitope recognized by A301-468A maps to a region between residue 250 and 300 of human KIAA0528 using the numbering given in entry NP_055617.1 (GeneID 9847).

Immunoglobulin concentration was determined by extinction coefficient: absorbance at 280 nm of 1.4 equals 1.0 mg of IgG.

APPLICATIONS Centrifuge tube to remove product from lid. Optimal working dilutions should be determined experimentally by the investigator. Prepare working dilution immediately before use.

Western Blot Not recommended. Use rabbit anti-KIAA0528 antibody A301-469A.

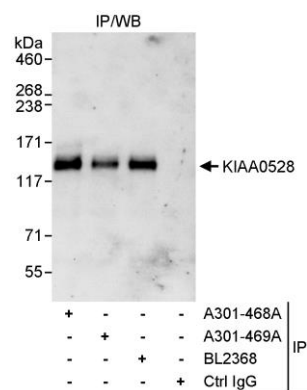
Immunoprecipitation 2 - 5 µg/mg lysate

APPLICATION NOTES Western blot of immunoprecipitates performed using Normal Pig Serum (Cat. No. S100-020), Goat anti-Rabbit Light Chain HRP Conjugate (Cat. No. A120-113P) and 4-8% SDS-PAGE (link to IP-western blot protocol in Additional Info section below).

ADDITIONAL INFO <https://www.bethyl.com/product/A301-468A>

Use the link above to view SDS, a current list of citations, and other product specific information. IP-western blot protocol: https://www.bethyl.com/content/protocol_IP_WB

This document certifies that this product has met all of the quality control standards defined by Bethyl Laboratories, Inc.
Eric McIntush, PhD | Chief Scientific Officer Date: June 21, 2019



Detection of human KIAA0528 by western blot of immunoprecipitates. *Samples:* Whole cell lysate (1 mg for IP, 20% of IP loaded) from HeLa cells. *Antibodies:* Affinity purified rabbit anti-KIAA0528 antibody A301-468A used for IP at 3 µg/mg lysate. KIAA0528 was also immunoprecipitated by rabbit anti-KIAA0528 antibodies A301-469A and BL2368, which recognize downstream epitopes. For blotting immunoprecipitated KIAA0528, A300-469A was used at 1 µg/ml. *Detection:* Chemiluminescence with an exposure time of 30 seconds.