

Symplekin Antibody

Rabbit Polyclonal

Antigen Affinity Purified

Protein ID NP_004810.2

Catalog No. A301-463A

GeneID 8189

Lot No. A301-463A-2



APPLICATIONS	IP, IHC
SPECIES REACTIVITY	Human
PRESUMED REACTIVITY	Based on 100% sequence identity, this antibody is predicted to react with Mouse
AMOUNT	100 µl
CONCENTRATION	1000 µg/ml
STORAGE/SHELF LIFE	2 – 8° C / 1 year from date of receipt
PHYSICAL STATE	Liquid
BUFFER	Tris-citrate/phosphate buffer, pH 7 to 8 containing 0.09% Sodium Azide
ISOTYPE	IgG
ORIGIN	USA
PRODUCTION PROCEDURES	Antibody was affinity purified using an epitope specific to Symplekin immobilized on solid support.

The epitope recognized by A301-463A maps to a region between residue 200 and 250 of human Symplekin using the numbering given in entry NP_004810.2 (GeneID 8189).

Immunoglobulin concentration was determined by extinction coefficient: absorbance at 280 nm of 1.4 equals 1.0 mg of IgG.

APPLICATIONS	Centrifuge tube to remove product from lid. Optimal working dilutions should be determined experimentally by the investigator. Prepare working dilution immediately before use.
Western Blot	Not recommended. Use rabbit anti-Symplekin antibody A301-464A or A301-465A.
Immunoprecipitation	2 – 10 µg/mg lysate
Immunohistochemistry	1:500 – 1:2,000. Epitope retrieval with Tris-EDTA pH 9.0 is recommended for FFPE tissue sections.

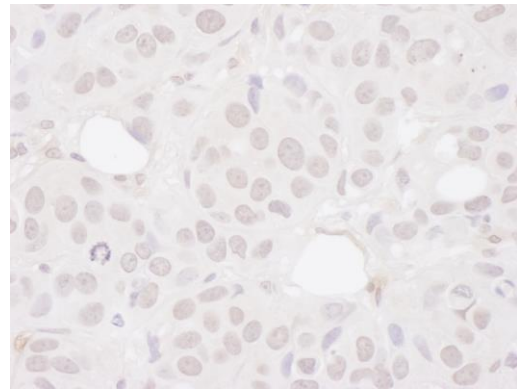
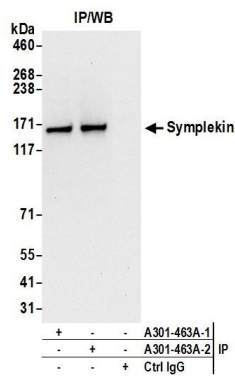
APPLICATION NOTES Western blot of immunoprecipitates performed using Normal Pig Serum (Cat. No. S100-020), Goat anti-Rabbit Light Chain HRP Conjugate (Cat. No. A120-113P) and 4-8% SDS-PAGE (link to IP-western blot protocol in Additional Info section below).

IHC HUMAN CONTROLS Breast Carcinoma

ADDITIONAL INFO <https://www.bethyl.com/product/A301-463A>
Use the link above to view SDS, a current list of citations, and other product specific information.
IP-western blot protocol: https://www.bethyl.com/content/protocol_IP_WB

This document certifies that this product has met all of the quality control standards defined by Bethyl Laboratories, Inc.
Eric McIntush, PhD | Chief Scientific Officer

Date: June 24, 2019



Detection of human Symplekin by western blot of immunoprecipitates. *Samples:* Whole cell lysate (0.5 or 1.0 mg per IP reaction; 20% of IP loaded) from HeLa cells prepared using NETN lysis buffer. *Antibodies:* Affinity purified rabbit anti-Symplekin antibody A301-463A (lot A301-463A-2) used for IP at 6 µg per reaction. Symplekin was also immunoprecipitated by a previous lot of this antibody (lot A301-463A-1). For blotting immunoprecipitated Symplekin, A301-465A was used at 1 µg/ml. *Detection:* Chemiluminescence with an exposure time of 10 seconds.

Detection of human Symplekin by immunohistochemistry. *Sample:* FFPE section of human breast carcinoma. *Antibody:* Affinity purified rabbit anti-Symplekin (Cat. No. A301-463A Lot2) used at a dilution of 1:1,000 (1 µg/ml). *Detection:* DAB