

CDC2L5 Antibody

Rabbit Polyclonal

Antigen Affinity Purified Protein ID NP_003709.3

Catalog No. A301-458A GeneID 8621

Lot No. A301-458A-2

APPLICATIONS	WB, IP
SPECIES REACTIVITY	Human
PRESUMED REACTIVITY	Based on 100% sequence identity, this antibody is predicted to react with Mouse and Bovine
AMOUNT	100 µl
CONCENTRATION	200 µg/ml
STORAGE/SHELF LIFE	2 - 8°C / 1 year from date of receipt
PHYSICAL STATE	Liquid
BUFFER	Tris-buffered Saline containing 0.1% BSA and 0.09% Sodium Azide
ISOTYPE	IgG
ORIGIN	USA
PRODUCTION PROCEDURES	Antibody was affinity purified using an epitope specific to CDC2L5 immobilized on solid support.

The epitope recognized by A301-458A maps to a region between residue 1125 and 1175 of human cell division cycle 2-like 5 using the numbering given in entry NP_003709.3 (GeneID 8621).

Immunoglobulin concentration was determined by extinction coefficient: absorbance at 280 nm of 1.4 equals 1.0 mg of IgG.

APPLICATIONS Centrifuge tube to remove product from lid. Optimal working dilutions should be determined experimentally by the investigator. Prepare working dilution immediately before use.

Western Blot 1:2,000 - 1:10,000

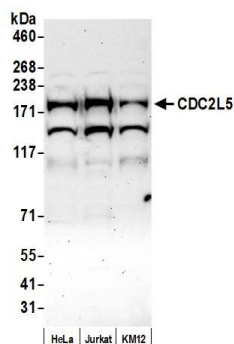
Immunoprecipitation 2 - 10 µg/mg lysate

ADDITIONAL INFO <https://www.bethyl.com/product/A301-458A>

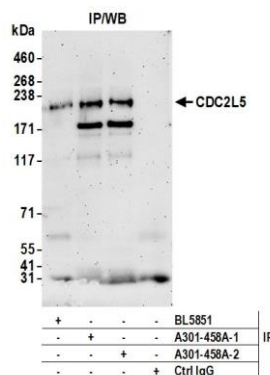
Use the link above to view SDS, a current list of citations, and other product specific information.

IP-western blot protocol: https://www.bethyl.com/content/protocol_IP_WB

This document certifies that this product has met all of the quality control standards defined by Bethyl Laboratories, Inc.
Michael Spencer, PhD Date: April 25, 2022



Detection of human CDC2L5 by western blot. *Samples:* Whole cell lysate (50 µg) from HeLa, Jurkat, and KM12 cells prepared using NETN lysis buffer. *Antibody:* Affinity purified rabbit anti-CDC2L5 antibody (A301-458A-2) used for WB at 0.1 µg/ml. *Detection:* Chemiluminescence with an exposure time of 75 seconds.



Detection of human CDC2L5 by western blot of immunoprecipitates. *Samples:* Whole cell lysate (1.0 mg per IP reaction; 20% of IP loaded) from HeLa cells prepared using NETN lysis buffer. *Antibodies:* Affinity purified rabbit anti-CDC2L5 antibody (A301-458A lot 2) used for IP at 6 µg per reaction. CDC2L5 was also immunoprecipitated by a previous lot of this antibody (A301-458A lot 1) and a second antibody against a different epitope of CDC2L5 (BL5851). For blotting immunoprecipitated CDC2L5, A301-458A was used at 0.04 µg/ml. *Detection:* Chemiluminescence with an exposure time of 3 minutes.