

CCDC131 Antibody

Rabbit Polyclonal

Antigen Affinity Purified

Protein ID NP_659419.3

Catalog No. A301-455A

GeneID 196441

Lot No. A301-455A-1



APPLICATIONS	WB, IP
SPECIES REACTIVITY	Human
AMOUNT	100 µl
CONCENTRATION	200 µg/ml
STORAGE/SHELF LIFE	2 - 8° C / 1 year from date of receipt
PHYSICAL STATE	Liquid
BUFFER	Tris-buffered Saline containing 0.1% BSA and 0.09% Sodium Azide
ISOTYPE	IgG
ORIGIN	USA
PRODUCTION PROCEDURES	Antibody was affinity purified using an epitope specific to CCDC131 immobilized on solid support.

The epitope recognized by A301-455A maps to a region between residue 300 and 350 of human coiled-coil domain containing 131 using the numbering given in entry NP_659419.3 (GeneID 196441).

Immunoglobulin concentration was determined by extinction coefficient: absorbance at 280 nm of 1.4 equals 1.0 mg of IgG.

APPLICATIONS Centrifuge tube to remove product from lid. Optimal working dilutions should be determined experimentally by the investigator. Prepare working dilution immediately before use.

Western Blot 1:2,000 - 1:10,000

Immunoprecipitation 2 - 5 µg/mg lysate

APPLICATION NOTES Western blot of immunoprecipitates performed using Normal Pig Serum (Cat. No. S100-020), Goat anti-Rabbit Light Chain HRP Conjugate (Cat. No. A120-113P) and 4-8% SDS-PAGE (link to IP-western blot protocol in Additional Info section below).

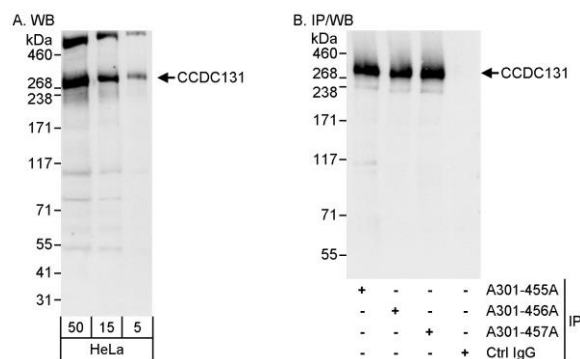
Western blot of lysates performed using standard western blot reagents and 4-8% SDS-PAGE.

ADDITIONAL INFO <https://www.bethyl.com/product/A301-455A>

Use the link above to view SDS, a current list of citations, and other product specific information.

IP-western blot protocol: https://www.bethyl.com/content/protocol_IP_WB

This document certifies that this product has met all of the quality control standards defined by Bethyl Laboratories, Inc.
Eric McIntush, PhD | Chief Scientific Officer Date: June 21, 2019



Detection of human CCDC131 by western blot and immunoprecipitation. *Samples:* Whole cell lysate (5, 15 and 50 µg for WB; 1 mg for IP, 20% of IP loaded) from HeLa cells. *Antibodies:* Affinity purified rabbit anti-CCDC131 antibody A301-455A used for WB at 0.04 µg/ml (A) and 1 µg/ml (B) and used for IP at 3 µg/mg lysate. CCDC131 was also immunoprecipitated by rabbit anti-CCDC131 antibodies A301-456A and A301-457A, which recognize downstream epitopes. *Detection:* Chemiluminescence with exposure times of 10 seconds (A) and 1 second (B).