

CIP2A Antibody

Rabbit Polyclonal

Antigen Affinity Purified

Protein ID NP_065941.1

Catalog No. A301-454A

GeneID 57650

Lot No. A301-454A-2



APPLICATIONS	WB, IP, IHC
SPECIES REACTIVITY	Human, Mouse, Rat
AMOUNT	100 µl
CONCENTRATION	200 µg/ml
STORAGE/SHELF LIFE	2 – 8° C / 1 year from date of receipt
PHYSICAL STATE	Liquid
BUFFER	Tris-buffered Saline containing 0.1% BSA and 0.09% Sodium Azide
ISOTYPE	IgG
ORIGIN	USA
PRODUCTION PROCEDURES	Antibody was affinity purified using an epitope specific to CIP2A immobilized on solid support.

The epitope recognized by A301-454A maps to a region between residue 853 and 903 of human cancerous inhibitor of PP2A using the numbering given in entry NP_065941.1 (GeneID 57650).

Immunoglobulin concentration was determined by extinction coefficient: absorbance at 280 nm of 1.4 equals 1.0 mg of IgG.

APPLICATIONS Centrifuge tube to remove product from lid. Optimal working dilutions should be determined experimentally by the investigator. Prepare working dilution immediately before use.

Western Blot 1:2,000 – 1:10,000

Immunoprecipitation 2 – 10 µg/mg lysate

Immunohistochemistry 1:100 to 1:500. Epitope retrieval with citrate buffer pH6.0 is recommended for FFPE tissue sections.

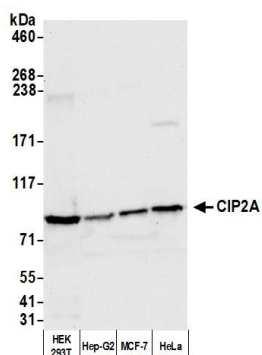
IHC HUMAN CONTROLS Colon Carcinoma, Ovarian Carcinoma, Prostate Carcinoma

ADDITIONAL INFO <https://www.bethyl.com/product/A301-454A>

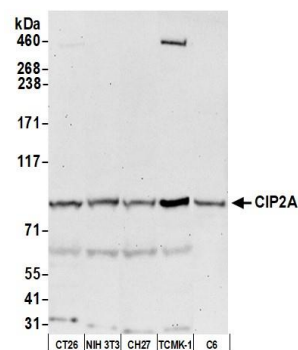
Use the link above to view SDS, a current list of citations, and other product specific information.

IP-western blot protocol: https://www.bethyl.com/content/protocol_IP-WB

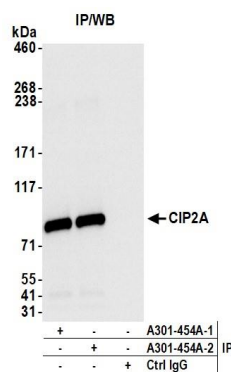
This document certifies that this product has met all of the quality control standards defined by Bethyl Laboratories, Inc.
Eric McIntush, PhD | Chief Scientific Officer Date: September 24, 2020



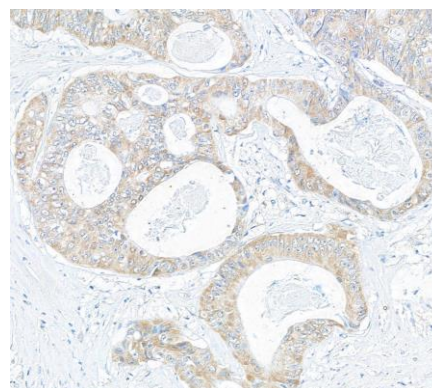
Detection of human CIP2A by western blot. *Samples:* Whole cell lysate (50 µg) from HEK293T, Hep-G2, MCF-7, and HeLa cells prepared using NETN lysis buffer. *Antibody:* Affinity purified rabbit anti-CIP2A antibody A301-454A (lot A301-454A-2) used for WB at 0.04 µg/ml. *Detection:* Chemiluminescence with an exposure time of 10 seconds.



Detection of human CIP2A by western blot. *Samples:* Whole cell lysate (50 µg) from HEK293T, Hep-G2, MCF-7, and HeLa cells prepared using NETN lysis buffer. *Antibody:* Affinity purified rabbit anti-CIP2A antibody A301-454A (lot A301-454A-2) used for WB at 0.04 µg/ml. *Detection:* Chemiluminescence with an exposure time of 10 seconds.



Detection of human CIP2A by western blot of immunoprecipitates. *Samples:* Whole cell lysate (1.0 mg per IP reaction; 20% of IP loaded) from HEK293T cells prepared using NETN lysis buffer. *Antibodies:* Affinity purified rabbit anti-CIP2A antibody A301-454A (lot A301-454A-2) used for IP at 6 µg per reaction. CIP2A was also immunoprecipitated by a previous lot of this antibody (lot A301-454A-1). For blotting immunoprecipitated CIP2A, A301-454A was used at 0.04 µg/ml. *Detection:* Chemiluminescence with an exposure time of 1 second.



Detection of human CIP2A by immunohistochemistry. *Sample:* FFPE colon carcinoma. *Antibody:* Affinity purified rabbit anti-CIP2A (Cat. No. A301-454A Lot2) used at a dilution of 1:200 (1 µg/ml). *Detection:* DAB