

FKBP4/FKBP52 Antibody

Rabbit Polyclonal

Antigen Affinity Purified

Protein ID NP_002005.1

Catalog No. A301-427A

GeneID 2288

Lot No. A301-427A-1



APPLICATIONS	WB, IP, IHC
SPECIES REACTIVITY	Human
AMOUNT	100 µl
CONCENTRATION	200 µg/ml
STORAGE/SHELF LIFE	2 – 8° C / 1 year from date of receipt
PHYSICAL STATE	Liquid
BUFFER	Tris-buffered Saline containing 0.1% BSA and 0.09% Sodium Azide
ISOTYPE	IgG
ORIGIN	USA
PRODUCTION PROCEDURES	Antibody was affinity purified using an epitope specific to FKBP4/FKBP52 immobilized on solid support.

The epitope recognized by A301-427A maps to a region between residue 400 and 440 human FK506 binding protein 4 using the numbering given in entry NP_002005.1 (GeneID 2288).

Immunoglobulin concentration was determined by extinction coefficient: absorbance at 280 nm of 1.4 equals 1.0 mg of IgG.

APPLICATIONS Centrifuge tube to remove product from lid. Optimal working dilutions should be determined experimentally by the investigator. Prepare working dilution immediately before use.

Western Blot 1:2,000 – 1:10,000

Immunoprecipitation 2 – 5 µg/mg lysate

Immunohistochemistry 1:200 – 1:1,000. Epitope retrieval with citrate buffer pH 6.0 is recommended for FFPE tissue sections.

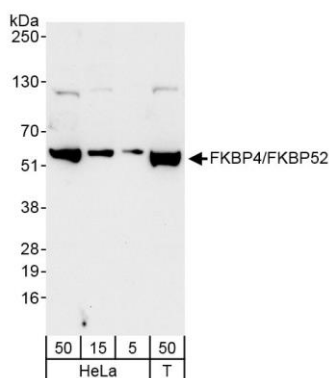
APPLICATION NOTES Western blot of immunoprecipitates performed using Normal Pig Serum (Cat. No. S100-020), Goat anti-Rabbit Light Chain HRP Conjugate (Cat. No. A120-113P) and 4-20% SDS-PAGE (link to IP-western blot protocol in Additional Info section below).

IHC HUMAN CONTROLS Western blot of lysates performed using standard western blot reagents and 4-20% SDS-PAGE. Breast Carcinoma, Prostate Carcinoma

ADDITIONAL INFO <https://www.bethyl.com/product/A301-427A>

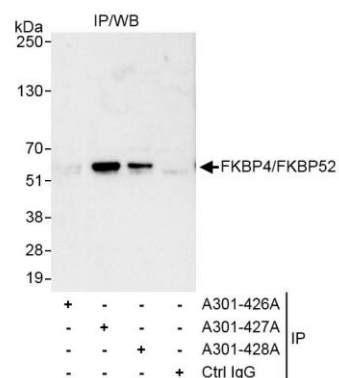
Use the link above to view SDS, a current list of citations, and other product specific information. IP-western blot protocol https://www.bethyl.com/content/protocol_IP_WB

This document certifies that this product has met all of the quality control standards defined by Bethyl Laboratories, Inc.
Eric McIntush, PhD | Chief Scientific Officer Date: October 18, 2019



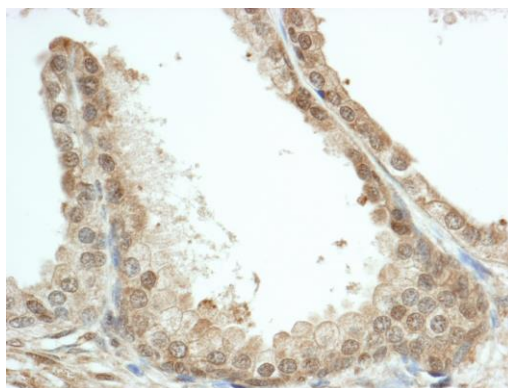
Detection of human FKBP4/FKBP52 by western blot.

Samples: Whole cell lysate from HeLa (5, 15 and 50 μ g) and HEK293T (T; 50 μ g) cells. *Antibodies:* Affinity purified rabbit anti-FKBP4/FKBP52 antibody A301-427A (lot A301-427A-1) used for WB at 0.04 μ g/ml. *Detection:* Chemiluminescence with exposure time of 30 seconds.



Detection of human FKBP4/FKBP52 by western blot of immunoprecipitates.

Samples: Whole cell lysate (1 mg for IP, 20% of IP loaded) from HeLa cells. *Antibodies:* Affinity purified rabbit anti-FKBP4/FKBP52 antibody A301-427A (lot A301-427A-1) used for IP at 3 μ g/mg lysate. FKBP4/FKBP52 was also immunoprecipitated by rabbit anti-FKBP4/FKBP52 antibody A301-428A, which recognizes a downstream epitope. For blotting immunoprecipitated FKBP4/FKBP52, A301-427A was used at 1.0 μ g/ml. *Detection:* Chemiluminescence with exposure time of 3 seconds.



Detection of human FKBP4/FKBP52 by immunohistochemistry.

Sample: FFPE section of human prostate carcinoma. *Antibody:* Affinity purified rabbit anti-FKBP4/FKBP52 (Cat. No. A301-427A lot 1) used at a dilution of 1:1,000 (0.2 μ g/ml). *Detection:* DAB