

Anillin Antibody

Rabbit Polyclonal

Antigen Affinity Purified

Protein ID NP_061155.2

Catalog No. A301-406A

GeneID 54443

Lot No. A301-406A-1



APPLICATIONS	WB, IP, IHC
SPECIES REACTIVITY	Human
AMOUNT	100 µl
CONCENTRATION	1000 µg/ml
STORAGE/SHELF LIFE	2 – 8° C / 1 year from date of receipt
PHYSICAL STATE	Liquid
BUFFER	Tris-citrate/phosphate buffer, pH 7 to 8 containing 0.09% Sodium Azide
ISOTYPE	IgG
ORIGIN	USA
PRODUCTION PROCEDURES	Antibody was affinity purified using an epitope specific to Anillin immobilized on solid support.

The epitope recognized by A301-406A maps to a region between residue 1074 and 1124 of human actin binding protein Anillin using the numbering given in entry NP_061155.2 (GeneID 54443).

Immunoglobulin concentration was determined by extinction coefficient: absorbance at 280 nm of 1.4 equals 1.0 mg of IgG.

APPLICATIONS Centrifuge tube to remove product from lid. Optimal working dilutions should be determined experimentally by the investigator. Prepare working dilution immediately before use.

Western Blot 1:2,000 – 1:10,000

Immunoprecipitation 2 – 5 µg/mg lysate

Immunohistochemistry 1:500 – 1:2,000. Epitope retrieval with citrate buffer pH 6.0 is recommended for FFPE tissue sections.

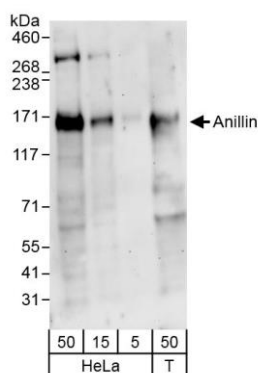
APPLICATION NOTES Western blot of immunoprecipitates performed using Normal Pig Serum (Cat. No. S100-020), Goat anti-Rabbit Light Chain HRP Conjugate (Cat. No. A120-113P) and 4-8% SDS-PAGE (link to IP-western blot protocol in Additional Info section below).

IHC HUMAN CONTROLS Western blot of lysates performed using standard western blot reagents and 4-8% SDS-PAGE. Breast Carcinoma, Colon Carcinoma, Prostate Carcinoma

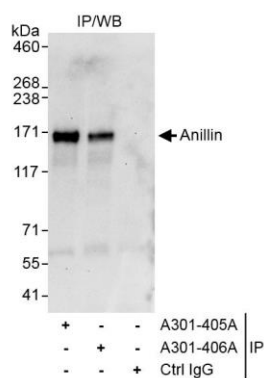
ADDITIONAL INFO <https://www.bethyl.com/product/A301-406A>

Use the link above to view SDS, a current list of citations, and other product specific information. IP-western blot protocol https://www.bethyl.com/content/protocol_IP_WB

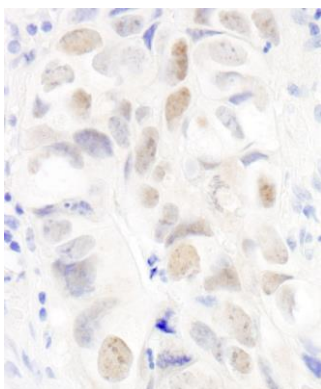
This document certifies that this product has met all of the quality control standards defined by Bethyl Laboratories, Inc.
Eric McIntush, PhD | Chief Scientific Officer Date: October 18, 2019



Detection of human Anillin by western blot. *Samples:* Whole cell lysate from HeLa (5, 15 and 50 μ g) and HEK293T (T; 50 μ g) cells. *Antibodies:* Affinity purified rabbit anti-Anillin antibody A301-406A (lot A301-406A-1) used for WB at 0.1 μ g/ml. *Detection:* Chemiluminescence with exposure time of 3 minutes.



Detection of human Anillin by western blot of immunoprecipitates. *Samples:* Whole cell lysate (1 mg for IP, 20% of IP loaded) from HeLa cells. *Antibodies:* Affinity purified rabbit anti-Anillin antibody A301-406A used for IP at 3 μ g/mg lysate. Anillin was also immunoprecipitated by rabbit anti-Anillin antibody A301-405A. For blotting immunoprecipitated Anillin, A301-406A was used at 1.0 μ g/ml. *Detection:* Chemiluminescence with exposure time of 3 seconds.



Detection of human Anillin by immunohistochemistry. *Sample:* FFPE section of human colon carcinoma. *Antibody:* Affinity purified rabbit anti-Anillin (Cat. No. A301-406A lot 1) used at a dilution of 1:1,000 (1 μ g/ml). *Detection:* DAB