

RFWD3 Antibody

Rabbit Polyclonal

Antigen Affinity Purified

Protein ID NP_060594.3

Catalog No. A301-398A

GeneID 55159

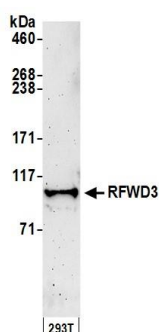
Lot No. A301-398A-2



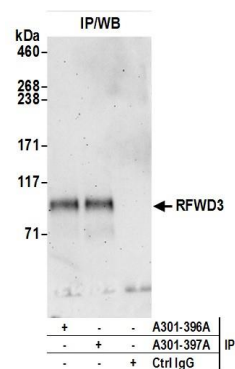
APPLICATIONS	WB				
SPECIES REACTIVITY	Human				
PRESUMED REACTIVITY	Based on 100% sequence identity, this antibody is predicted to react with Pig, Orangutan, Monkey, Gorilla and Chimpanzee				
AMOUNT	100 µl				
CONCENTRATION	200 µg/ml				
STORAGE/SHELF LIFE	2 - 8° C / 1 year from date of receipt				
PHYSICAL STATE	Liquid				
BUFFER	Tris-buffered Saline containing 0.1% BSA and 0.09% Sodium Azide				
ISOTYPE	IgG				
ORIGIN	USA				
PRODUCTION PROCEDURES	<p>Antibody was affinity purified using an epitope specific to RFWD3 immobilized on solid support.</p> <p>The epitope recognized by A301-398A maps to a region between residue 724 and 774 of human ring finger and WD repeat domain 3 using the numbering given in entry NP_060594.3 (GeneID 55159).</p> <p>Immunoglobulin concentration was determined by extinction coefficient: absorbance at 280 nm of 1.4 equals 1.0 mg of IgG.</p>				
APPLICATIONS	<p>Centrifuge tube to remove product from lid. Optimal working dilutions should be determined experimentally by the investigator. Prepare working dilution immediately before use.</p> <table><tr><td>Western Blot</td><td>1:2,000 - 1:10,000</td></tr><tr><td>Immunoprecipitation</td><td>Not recommended. Use rabbit anti-RFWD3 antibody A301-396A or A301-397A.</td></tr></table>	Western Blot	1:2,000 - 1:10,000	Immunoprecipitation	Not recommended. Use rabbit anti-RFWD3 antibody A301-396A or A301-397A.
Western Blot	1:2,000 - 1:10,000				
Immunoprecipitation	Not recommended. Use rabbit anti-RFWD3 antibody A301-396A or A301-397A.				
APPLICATION NOTES	Western blot of lysates performed using standard western blot reagents and 4-8% SDS-PAGE.				
ADDITIONAL INFO	<p>https://www.bethyl.com/product/A301-398A</p> <p>Use the link above to view SDS, a current list of citations, and other product specific information.</p>				

This document certifies that this product has met all of the quality control standards defined by Bethyl Laboratories, Inc.
Eric McIntush, PhD | Chief Scientific Officer

Date: June 21, 2019



Detection of human RFWD3 by western blot. *Samples:* Whole cell lysate (50 μ g) from HEK293T cells prepared using NETN lysis buffer. *Antibody:* Affinity purified rabbit anti-RFWD3 antibody A301-398A (lot A301-398A-2) used for WB at 0.1 μ g/ml. *Detection:* Chemiluminescence with an exposure time of 3 minutes.



Detection of human RFWD3 by western blot of immunoprecipitates. *Samples:* Whole cell lysate (0.5 or 1.0 mg per IP reaction; 20% of IP loaded) from HEK293T cells prepared using NETN lysis buffer. *Antibodies:* RFWD3 was immunoprecipitated by rabbit anti-RFWD3 antibodies A301-396A and A301-397A. For blotting immunoprecipitated RFWD3, A301-398A was used at 1 μ g/ml. *Detection:* Chemiluminescence with an exposure time of 3 minutes.