

RPA43/TWISTNB Antibody

Rabbit Polyclonal

Antigen Affinity Purified

Protein ID NP_001002926.1

Catalog No. A301-394A

GeneID 221830

Lot No. A301-394A-1



APPLICATIONS	WB
SPECIES REACTIVITY	Human
AMOUNT	100 µl
CONCENTRATION	200 µg/ml
STORAGE/SHELF LIFE	2 - 8° C / 1 year from date of receipt
PHYSICAL STATE	Liquid
BUFFER	Tris-buffered Saline containing 0.1% BSA and 0.09% Sodium Azide
ISOTYPE	IgG
ORIGIN	USA
PRODUCTION PROCEDURES	Antibody was affinity purified using an epitope specific to RPA43/TWISTNB immobilized on solid support.

The epitope recognized by A301-394A maps to a region between residue 288 and 338 of human DNA-directed RNA polymerase I subunit RPA43 (TWIST neighbor) using the numbering given in entry NP_001002926.1 (GeneID 221830).

Immunoglobulin concentration was determined by extinction coefficient: absorbance at 280 nm of 1.4 equals 1.0 mg of IgG.

APPLICATIONS Centrifuge tube to remove product from lid. Optimal working dilutions should be determined experimentally by the investigator. Prepare working dilution immediately before use.

Western Blot 1:2,000 – 1:10,000

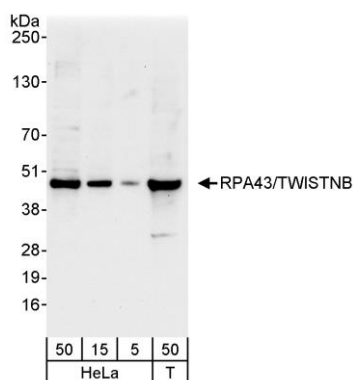
Immunoprecipitation Not recommended

APPLICATION NOTES Western blot of lysates performed using standard western blot reagents and 4-20% SDS-PAGE.

ADDITIONAL INFO <https://www.bethyl.com/product/A301-394A>

Use the link above to view SDS, a current list of citations, and other product specific information.

This document certifies that this product has met all of the quality control standards defined by Bethyl Laboratories, Inc.
Eric McIntush, PhD | Chief Scientific Officer Date: June 21, 2019

**Detection of human RPA43/TWISTNB by western blot.**

Samples: Whole cell lysate from HeLa (5, 15 and 50 µg) and HEK293T (T; 50 µg) cells. *Antibody:* Affinity purified rabbit anti-RPA43/TWISTNB antibody A301-394A used for WB at 0.04 µg/ml. *Detection:* Chemiluminescence with an exposure time of 10 seconds.