

# AKAP1 Antibody

Rabbit Polyclonal

Antigen Affinity Purified

Protein ID NP\_003479.1

Catalog No. A301-379A

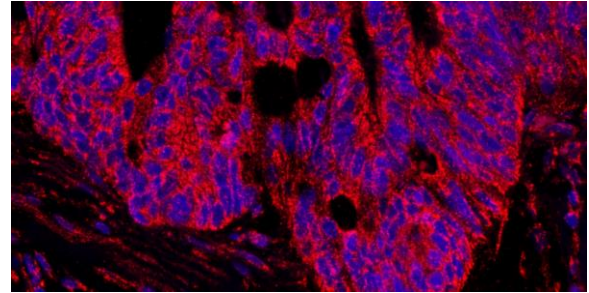
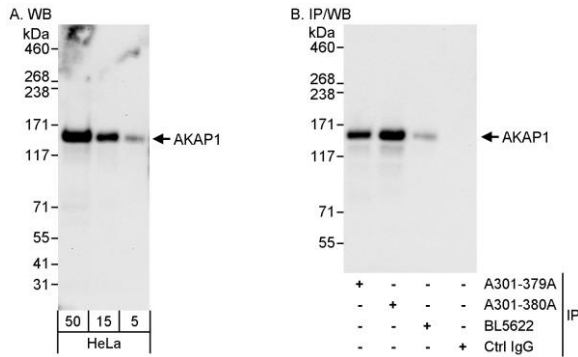
GeneID 8165

Lot No. A301-379A-1



<b>APPLICATIONS</b>	WB, IP, IHC
<b>SPECIES REACTIVITY</b>	Human
<b>AMOUNT</b>	100 µl
<b>CONCENTRATION</b>	200 µg/ml
<b>STORAGE/SHELF LIFE</b>	2 – 8° C / 1 year from date of receipt
<b>PHYSICAL STATE</b>	Liquid
<b>BUFFER</b>	Tris-buffered Saline containing 0.1% BSA and 0.09% Sodium Azide
<b>ISOTYPE</b>	IgG
<b>ORIGIN</b>	USA
<b>PRODUCTION PROCEDURES</b>	<p>Antibody was affinity purified using an epitope specific to AKAP1 immobilized on solid support.</p> <p>The epitope recognized by A301-379A maps to a region between residue 375 and 425 of human A kinase (PRKA) anchor protein 1 using the numbering given in entry NP_003479.1 (GeneID 8165).</p> <p>Immunoglobulin concentration was determined by extinction coefficient: absorbance at 280 nm of 1.4 equals 1.0 mg of IgG.</p>
<b>APPLICATIONS</b>	<p>Centrifuge tube to remove product from lid. Optimal working dilutions should be determined experimentally by the investigator. Prepare working dilution immediately before use.</p> <p>Western Blot 1:2,000 – 1:10,000</p> <p>Immunoprecipitation 2 – 5 µg/mg lysate</p> <p>Immunohistochemistry 1:100 – 1:500. Epitope retrieval with citrate buffer pH 6.0 is recommended for FFPE tissue sections.</p>
<b>APPLICATION NOTES</b>	<p>Western blot of immunoprecipitates performed using Normal Pig Serum (Cat. No. S100-020), Goat anti-Rabbit Light Chain HRP Conjugate (Cat. No. A120-113P) and 4-8% SDS-PAGE (link to IP-western blot protocol in Additional Info section below).</p> <p>Western blot of lysates performed using standard western blot reagents and 4-8% SDS-PAGE.</p>
<b>IHC HUMAN CONTROLS</b>	Breast Carcinoma, Colon Carcinoma, Prostate Carcinoma, Testicular Seminoma
<b>ADDITIONAL INFO</b>	<p><a href="https://www.bethyl.com/product/A301-379A">https://www.bethyl.com/product/A301-379A</a></p> <p>Use the link above to view SDS, a current list of citations, and other product specific information. IP-western blot protocol: <a href="https://www.bethyl.com/content/protocol_IP_WB">https://www.bethyl.com/content/protocol_IP_WB</a></p>

This document certifies that this product has met all of the quality control standards defined by Bethyl Laboratories, Inc.  
Eric McIntush, PhD | Chief Scientific Officer Date: June 21, 2019



**Detection of human AKAP1 by western blot and immunoprecipitation.** *Samples:* Whole cell lysate (5, 15 and 50 µg for WB; 1 mg for IP, 20% of IP loaded) from HeLa cells. *Antibodies:* Affinity purified rabbit anti-AKAP1 antibody A301-379A used for WB at 0.04 µg/ml (A) and 1 µg/ml (B) and used for IP at 3 µg/mg lysate. AKAP1 was also immunoprecipitated by rabbit anti-AKAP1 antibodies A301-380A and BL5622, which recognize downstream epitopes. *Detection:* Chemiluminescence with exposure times of 30 seconds (A) and 3 seconds (B).

**Detection of human AKAP1 by immunohistochemistry.** *Sample:* FFPE section of human prostate carcinoma. *Antibody:* Affinity purified rabbit anti-AKAP1 (Cat. No. A301-379A) used at a dilution of 1:100 (2 µg/ml). *Detection:* Red-fluorescent goat anti-rabbit IgG highly cross-adsorbed Antibody.