

# CAD Antibody

Rabbit Polyclonal

Antigen Affinity Purified

Protein ID NP\_004332.2

Catalog No. A301-373A

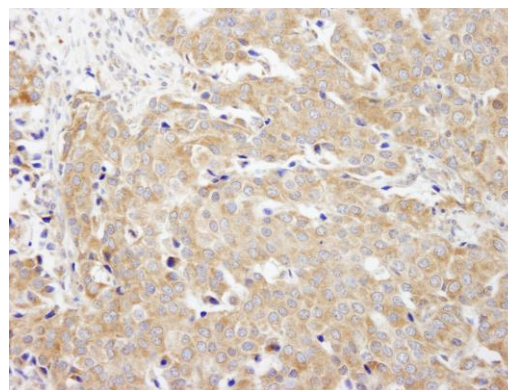
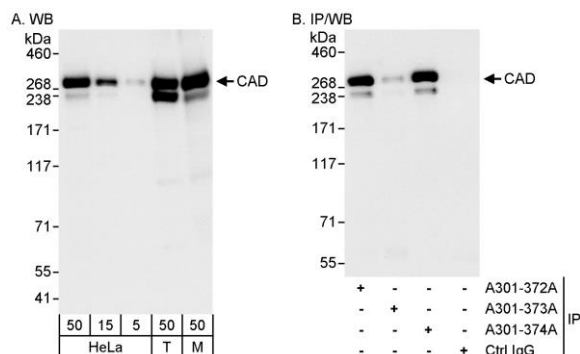
GeneID 790

Lot No. A301-373A-1



<b>APPLICATIONS</b>	WB, IHC
<b>SPECIES REACTIVITY</b>	Human, Mouse
<b>AMOUNT</b>	100 µl
<b>CONCENTRATION</b>	200 µg/ml
<b>STORAGE/SHELF LIFE</b>	2 - 8° C / 1 year from date of receipt
<b>PHYSICAL STATE</b>	Liquid
<b>BUFFER</b>	Tris-buffered Saline containing 0.1% BSA and 0.09% Sodium Azide
<b>ISOTYPE</b>	IgG
<b>ORIGIN</b>	USA
<b>PRODUCTION PROCEDURES</b>	<p>Antibody was affinity purified using an epitope specific to CAD immobilized on solid support.</p> <p>The epitope recognized by A301-373A maps to a region between residue 1650 and 1700 of human carbamoyl-phosphate synthetase 2, aspartate transcarbamylase, and dihydroorotase using the numbering given in entry NP_004332.2 (GeneID 790).</p> <p>Immunoglobulin concentration was determined by extinction coefficient: absorbance at 280 nm of 1.4 equals 1.0 mg of IgG.</p>
<b>APPLICATIONS</b>	<p>Centrifuge tube to remove product from lid. Optimal working dilutions should be determined experimentally by the investigator. Prepare working dilution immediately before use.</p> <p>Western Blot 1:2,000 - 1:10,000</p> <p>Immunoprecipitation Not recommended. Use rabbit anti-CAD antibody A301-372A or A301-374A.</p> <p>Immunohistochemistry 1:100 - 1:500. Epitope retrieval with citrate buffer pH 6.0 is recommended for FFPE tissue sections.</p>
<b>APPLICATION NOTES</b>	Western blot of lysates performed using standard western blot reagents and 4-8% SDS-PAGE.
<b>IHC HUMAN CONTROLS</b>	Breast Carcinoma, Colon Carcinoma, Ovarian Carcinoma
<b>ADDITIONAL INFO</b>	<p><a href="https://www.bethyl.com/product/A301-373A">https://www.bethyl.com/product/A301-373A</a></p> <p>Use the link above to view SDS, a current list of citations, and other product specific information.</p>

This document certifies that this product has met all of the quality control standards defined by Bethyl Laboratories, Inc.  
Eric McIntush, PhD | Chief Scientific Officer Date: June 21, 2019



**Detection of human and mouse CAD by western blot (h&m) and immunoprecipitation (h).** *Samples:* Whole cell lysate from HeLa (5, 15 and 50 µg for WB; 1 mg for IP, 20% of IP loaded), HEK293T (T; 50 µg) and mouse NIH 3T3 (M; 50 µg) cells. *Antibodies:* Affinity purified rabbit anti-CAD antibody A301-373A used for WB at 0.04 µg/ml (A) and 0.1 µg/ml (B) and used for IP at 3 µg/mg lysate. CAD was also immunoprecipitated by rabbit anti-CAD antibodies A301-372A and A301-374A, which recognize other epitopes. *Detection:* Chemiluminescence with exposure times of 3 seconds (A) and 10 seconds (B).

**Detection of human CAD by immunohistochemistry.** *Sample:* FFPE section of human breast carcinoma. *Antibody:* Affinity purified rabbit anti-CAD (Cat. No. A301-373A) used at a dilution of 1:200 (1 µg/ml). *Detection:* DAB