

Pericentrin/Kendrin Antibody

Rabbit Polyclonal

Antigen Affinity Purified Protein ID NP_006022.3

Catalog No. A301-348A GeneID 5116

Lot No. A301-348A-4



APPLICATIONS WB, IP, ICC-IF

SPECIES REACTIVITY Human

AMOUNT 100 µl

CONCENTRATION 1000 µg/ml

STORAGE/SHELF LIFE 2 – 8° C / 1 year from date of receipt

PHYSICAL STATE Liquid

BUFFER Tris-citrate/phosphate buffer, pH 7 to 8 containing 0.09% Sodium Azide

ISOTYPE IgG

ORIGIN USA

PRODUCTION PROCEDURES Antibody was affinity purified using an epitope specific to Pericentrin/Kendrin immobilized on solid support.

The epitope recognized by A301-348A maps to a region between residue 175 and 225 of human Pericentrin/Kendrin using the numbering given in entry NP_006022.3 (GeneID 5116).

Immunoglobulin concentration was determined by extinction coefficient: absorbance at 280 nm of 1.4 equals 1.0 mg of IgG.

APPLICATIONS Centrifuge tube to remove product from lid. Optimal working dilutions should be determined experimentally by the investigator. Prepare working dilution immediately before use.

Western Blot 1:2,000 – 1:10,000

Immunoprecipitation 2 – 10 µg/mg lysate

Immunofluorescence (ICC) 1:1,000 – 1:5,000. Formaldehyde or Acetone fixation is recommended. Permeabilization with Triton-X 100 is recommended for formaldehyde-fixed cells.

IHC HUMAN CONTROLS HeLa Cells

ADDITIONAL INFO <https://www.bethyl.com/product/A301-348A>

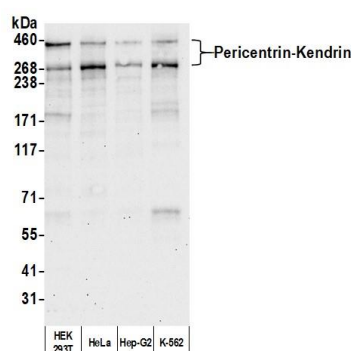
Use the link above to view SDS, a current list of citations, and other product specific information.

IP-western blot protocol: https://www.bethyl.com/content/protocol_IP_WB

This document certifies that this product has met all of the quality control standards defined by Bethyl Laboratories, Inc.

Brian McWilliams, PhD

Date: April 8, 2021

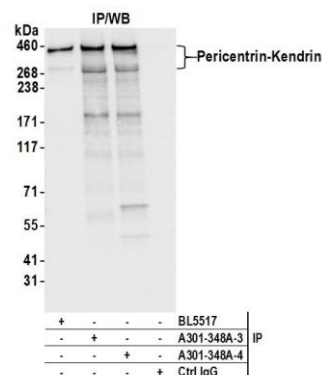


Detection of human Pericentrin-Kendrin by western blot.

Samples: Whole cell lysate (10 µg) from HEK293T, HeLa, Hep-G2, and K-562 cells prepared using NETN lysis buffer.

Antibody: Affinity purified rabbit anti-Pericentrin-Kendrin antibody (A301-348A lot 4) used for WB at 0.04 µg/ml.

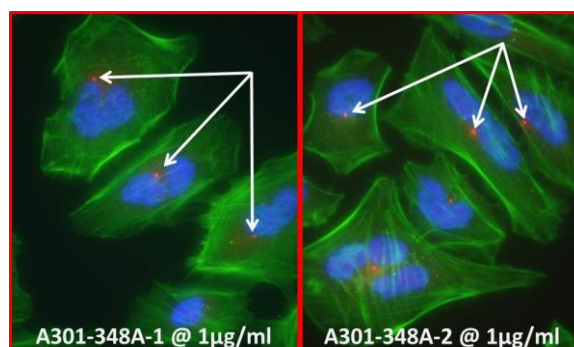
Detection: Chemiluminescence with an exposure time of 30 second.



Detection of human Pericentrin-Kendrin by western blot of immunoprecipitates.

Samples: Whole cell lysate (1.0 mg per IP reaction; 20% of IP loaded) from HEK293T cells prepared using NETN lysis buffer. **Antibodies:** Affinity purified rabbit anti-Pericentrin-Kendrin antibody (A301-348A lot 4) used for IP at 6 µg per reaction.

Pericentrin-Kendrin was also immunoprecipitated by a previous lot of this antibody (A301-348A lot 3) and another rabbit anti-Pericentrin-Kendrin antibody (BL5517). For blotting immunoprecipitated Pericentrin-Kendrin, A301-348A was used at 0.1 µg/ml. **Detection:** Chemiluminescence with an exposure time of 1 second.



Detection of human Pericentrin/Kendrin by immunocytochemistry. **Sample:** Formaldehyde-fixed asynchronous HeLa cells. **Antibody:** Affinity purified rabbit anti-Pericentrin/Kendrin (Cat. No.A301-348A Lot2) used at a dilution of 1:1,000 (1 µg/ml). **Detection:** Red-fluorescent goat anti-rabbit IgG-heavy and light chain cross-adsorbed Antibody DyLight® 594 Conjugated used at a dilution of 1:100. Counterstain. DAPI (blue) and Phalloidin (green)