

CP110 Antibody

Rabbit Polyclonal

Antigen Affinity Purified

Catalog No. A301-343A

Lot No. A301-343A-2

Protein ID CAH18111.1

GeneID 9738



| | |
|------------------------------|---|
| APPLICATIONS | WB, IP |
| SPECIES REACTIVITY | Human |
| AMOUNT | 100 µl |
| CONCENTRATION | 200 µg/ml |
| STORAGE/SHELF LIFE | 2 – 8° C / 1 year from date of receipt |
| PHYSICAL STATE | Liquid |
| BUFFER | Tris-buffered Saline containing 0.1% BSA and 0.09% Sodium Azide |
| ISOTYPE | IgG |
| ORIGIN | USA |
| PRODUCTION PROCEDURES | Antibody was affinity purified using an epitope specific to CP110 immobilized on solid support. |

The epitope recognized by A301-343A maps to a region between residue 575 and 625 of human CP110 protein using the numbering given in entry CAH18111.1 (GeneID 9738).

Immunoglobulin concentration was determined by extinction coefficient: absorbance at 280 nm of 1.4 equals 1.0 mg of IgG.

APPLICATIONS Centrifuge tube to remove product from lid. Optimal working dilutions should be determined experimentally by the investigator. Prepare working dilution immediately before use.

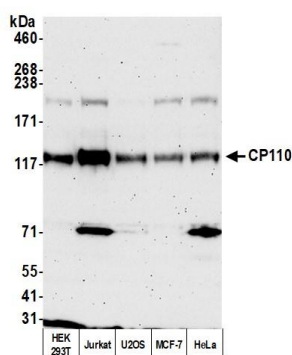
Western Blot 1:2,000 – 1:10,000

Immunoprecipitation 2 – 10 µg/mg lysate

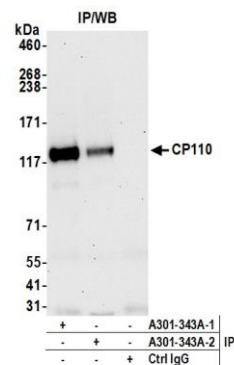
ADDITIONAL INFO <https://www.bethyl.com/product/A301-343A>

Use the link above to view SDS, a current list of citations, and other product specific information.
IP-western blot protocol: https://www.bethyl.com/content/protocol_IP_WB

This document certifies that this product has met all of the quality control standards defined by Bethyl Laboratories, Inc.
Eric McIntush, PhD | Chief Scientific Officer Date: July 8, 2020



Detection of human CP110 by western blot. *Samples:* Whole cell lysate (50 μ g) from HEK293T, Jurkat, U2OS, MCF-7, and HeLa cells prepared using NETN lysis buffer. *Antibody:* Affinity purified rabbit anti-CP110 antibody A301-343A Lot 2 used for WB at 0.1 μ g/ml. *Detection:* Chemiluminescence with an exposure time of 3 minutes.



Detection of human CP110 by western blot of immunoprecipitates. *Samples:* Whole cell lysate (1.0 mg per IP reaction; 20% of IP loaded) from Jurkat cells prepared using NETN lysis buffer. *Antibodies:* Affinity purified rabbit anti-CP110 antibody A301-343A Lot 2 used for IP at 6 μ g per reaction. CP110 was also immunoprecipitated by a previous lot of this antibody (A301-343A Lot1). For blotting immunoprecipitated CP110, A301-343A was used at 0.04 μ g/ml. *Detection:* Chemiluminescence with an exposure time of 3 minutes.