

GTF2IRD/TFII-IRD1 Antibody

Rabbit Polyclonal

Antigen Affinity Purified	Protein ID	NP_057412.1
Catalog No. A301-333A	GeneID	9569
Lot No. A301-333A-2		

APPLICATIONS	WB, IHC
SPECIES REACTIVITY	Human
AMOUNT	100 µl
CONCENTRATION	200 µg/ml
STORAGE/SHELF LIFE	2 – 8°C / 1 year from date of receipt
PHYSICAL STATE	Liquid
BUFFER	Tris-buffered Saline containing 0.1% BSA and 0.09% Sodium Azide
ISOTYPE	IgG
ORIGIN	USA
PRODUCTION PROCEDURES	Antibody was affinity purified using an epitope specific to GTF2IRD/TFII-IRD1 immobilized on solid support.

The epitope recognized by A301-333A maps to a region between residue 909 and 959 of human general transcription factor 2I repeat domain containing 1 using the numbering given in entry NP_057412.1 (GeneID 9569).

Immunoglobulin concentration was determined by extinction coefficient: absorbance at 280 nm of 1.4 equals 1.0 mg of IgG.

APPLICATIONS Centrifuge tube to remove product from lid. Optimal working dilutions should be determined experimentally by the investigator. Prepare working dilution immediately before use.

Western Blot 1:2,000 – 1:10,000

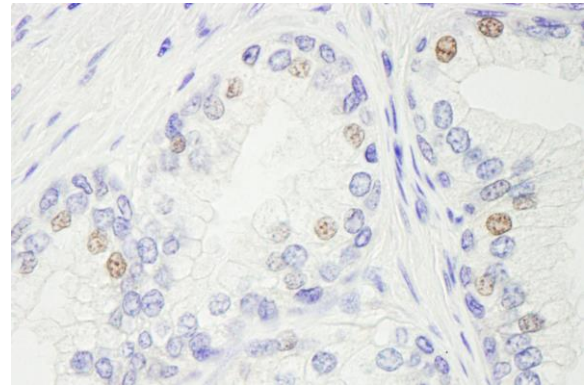
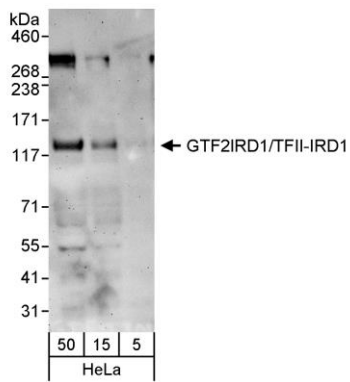
Immunohistochemistry 1:100 – 1:500. Epitope retrieval with citrate buffer pH 6.0 is recommended for FFPE tissue sections.

IHC HUMAN CONTROLS Prostate Carcinoma

ADDITIONAL INFO <https://www.bethyl.com/product/A301-333A>

Use the link above to view SDS, a current list of citations, and other product specific information. IP-western blot protocol: https://www.bethyl.com/content/protocol_IP_WB

This document certifies that this product has met all of the quality control standards defined by Bethyl Laboratories, Inc.
Michael Spencer, PhD Date: March 18, 2022

**Detection of human GTF2IRD1/TFII-IRD1 by western blot.**

Samples: Whole cell lysate (5, 15, and 50 µg) from HeLa cells. *Antibody:* Affinity purified rabbit anti-GTF2IRD1/TFII-IRD1 antibody (A301-333A lot 2) used at 0.1 µg/ml. *Detection:* Chemiluminescence with an exposure time of 3 minutes.

Detection of human GTF2IRD1/TFII-IRD1 by immunohistochemistry.

Sample: FFPE section of human prostate carcinoma. *Antibody:* Affinity purified rabbit anti-GTF2IRD1/TFII-IRD1 (Cat. No. A301-333A Lot1) used at a dilution of 1:200 (1 µg/ml). *Detection:* DAB