

PSF/SFPQ Antibody

Rabbit Polyclonal

Antigen Affinity Purified

Protein ID NP_005057.1

Catalog No. A301-322A

GeneID 6421

Lot No. A301-322A-1



| | |
|------------------------------|----------------------------------------------------------------------------------------------------|
| APPLICATIONS | WB, IP, IHC |
| SPECIES REACTIVITY | Human, Mouse |
| AMOUNT | 100 µl |
| CONCENTRATION | 200 µg/ml |
| STORAGE/SHELF LIFE | 2 - 8° C / 1 year from date of receipt |
| PHYSICAL STATE | Liquid |
| BUFFER | Tris-buffered Saline containing 0.1% BSA and 0.09% Sodium Azide |
| ISOTYPE | IgG |
| ORIGIN | USA |
| PRODUCTION PROCEDURES | Antibody was affinity purified using an epitope specific to PSF/SFPQ immobilized on solid support. |

The epitope recognized by A301-322A maps to a region between residue 657 and 707 of human Polypyrimidine tract-binding protein-associated-splicing factor (Splicing factor, proline- and glutamine-rich) using the numbering given in entry NP_005057.1 (GeneID 6421).

Immunoglobulin concentration was determined by extinction coefficient: absorbance at 280 nm of 1.4 equals 1.0 mg of IgG.

APPLICATIONS Centrifuge tube to remove product from lid. Optimal working dilutions should be determined experimentally by the investigator. Prepare working dilution immediately before use.

| | |
|----------------------|--------------------------------------------------------------------------------------------------------|
| Western Blot | 1:2,000 - 1:10,000 |
| Immunoprecipitation | 2 - 5 µg/mg lysate |
| Immunohistochemistry | 1:500 - 1:2,000. Epitope retrieval with citrate buffer pH 6.0 is recommended for FFPE tissue sections. |

APPLICATION NOTES Western blot of immunoprecipitates performed using Normal Pig Serum (Cat. No. S100-020), Goat anti-Rabbit Light Chain HRP Conjugate (Cat. No. A120-113P) and 4-8% SDS-PAGE (link to IP-western blot protocol in Additional Info section below).

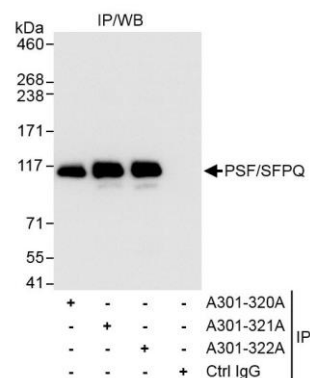
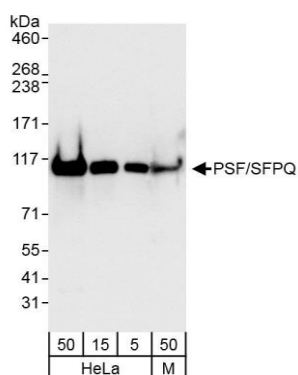
IHC HUMAN CONTROLS Western blot of lysates performed using standard western blot reagents and 4-8% SDS-PAGE. Bladder Cell Carcinoma, Breast Carcinoma, Colon Carcinoma, Ovarian Carcinoma, Prostate Carcinoma, Small Cell Lung Cancer, Stomach Adenocarcinoma, Testicular Seminoma

IHC MOUSE CONTROLS Colon Carcinoma CT26, Renal Cell Carcinoma, Teratoma

ADDITIONAL INFO <https://www.bethyl.com/product/A301-322A>

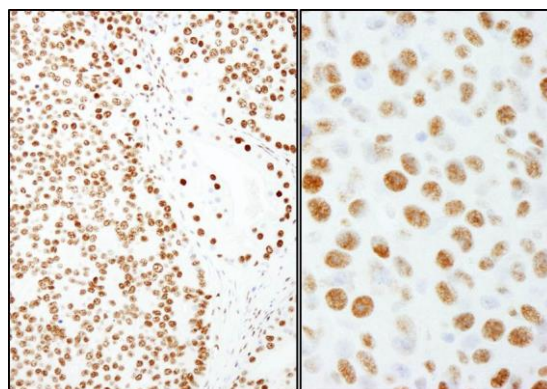
Use the link above to view SDS, a current list of citations, and other product specific information. IP-western blot protocol https://www.bethyl.com/content/protocol_IP_WB

This document certifies that this product has met all of the quality control standards defined by Bethyl Laboratories, Inc.
Eric McIntush, PhD | Chief Scientific Officer Date: October 18, 2019



Detection of human and mouse PSF/SFPQ by western blot. *Samples:* Whole cell lysate from HeLa (5, 15 and 50 µg) and mouse NIH 3T3 (M; 50 µg) cells. *Antibodies:* Affinity purified rabbit anti-PSF/SFPQ antibody A301-322A (lot A301-322A-1) used for WB at 0.04 µg/ml. *Detection:* Chemiluminescence with exposure time of 3 seconds.

Detection of human PSF/SFPQ by western blot of immunoprecipitates. *Samples:* Whole cell lysate (1 mg for IP, 20% of IP loaded) from HeLa cells. *Antibodies:* Affinity purified rabbit anti-PSF/SFPQ antibody A301-322A (lot A301-322A-1) used for IP at 3 µg/mg lysate. PSF/SFPQ was also immunoprecipitated by rabbit anti-PSF/SFPQ antibodies A301-320A and A301-321A, which recognize upstream epitopes. For blotting immunoprecipitated PSF/SFPQ, A301-322A was used at 1.0 µg/ml. *Detection:* Chemiluminescence with exposure time of 1 second.



Detection of human and mouse PSF/SFPQ by immunohistochemistry. *Sample:* FFPE section of human prostate carcinoma (left) and mouse CT26 colon carcinoma (right). *Antibody:* Affinity purified rabbit anti- PSF/SFPQ (Cat. No. A301-322A lot 1) used at a dilution of 1:500 (0.4 µg/ml). *Detection:* DAB