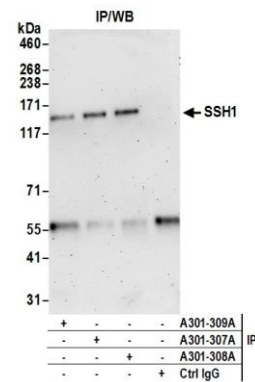


Detection of human SSH1 by western blot. *Samples:* Whole cell lysate (15 and 50 μ g) from HeLa and (50 μ g) from HEK293T cells prepared using NETN lysis buffer. *Antibody:* Affinity purified rabbit anti-SSH1 antibody A301-309A (lot A301-309A-2) used for WB at 0.1 μ g/ml. *Detection:* Chemiluminescence with an exposure time of 3 minutes.



Detection of human SSH1 by western blot of immunoprecipitates. *Samples:* Whole cell lysate (0.5 or 1.0 mg per IP reaction; 20% of IP loaded) from HeLa cells prepared using NETN lysis buffer. *Antibodies:* Affinity purified rabbit anti-SSH1 antibody A301-309A (lot A301-309A-2) used for IP at 6 μ g per reaction. SSH1 was also immunoprecipitated by rabbit anti-SSH1 antibodies A301-307A and A301-308A. For blotting immunoprecipitated SSH1, A301-309A was used at 1 μ g/ml. *Detection:* Chemiluminescence with an exposure time of 3 minutes.