

DOCK10 Antibody

Rabbit Polyclonal

Antigen Affinity Purified

Protein ID NP_055504.2

Catalog No. A301-305A

GeneID 55619

Lot No. A301-305A-2



APPLICATIONS	WB, IP
SPECIES REACTIVITY	Human
AMOUNT	100 µl
CONCENTRATION	1000 µg/ml
STORAGE/SHELF LIFE	2 – 8° C / 1 year from date of receipt
PHYSICAL STATE	Liquid
BUFFER	Tris-citrate/phosphate buffer, pH 7 to 8 containing 0.09% Sodium Azide
ISOTYPE	IgG
ORIGIN	USA
PRODUCTION PROCEDURES	Antibody was affinity purified using an epitope specific to DOCK10 immobilized on solid support.

The epitope recognized by A301-305A maps to a region between residue 100 and 150 of human dedicator of cytokinesis 10 using the numbering given in entry NP_055504.2 (GeneID 55619).

Immunoglobulin concentration was determined by extinction coefficient: absorbance at 280 nm of 1.4 equals 1.0 mg of IgG.

APPLICATIONS Centrifuge tube to remove product from lid. Optimal working dilutions should be determined experimentally by the investigator. Prepare working dilution immediately before use.

Western Blot 1:2,000 – 1:10,000

Immunoprecipitation 2 – 10 µg/mg lysate

APPLICATION NOTES Western blot of immunoprecipitates performed using Normal Pig Serum (Cat. No. S100-020), Goat anti-Rabbit Light Chain HRP Conjugate (Cat. No. A120-113P) and 4-8% SDS-PAGE (link to IP-western blot protocol in Additional Info section below).

Western blot of lysates performed using standard western blot reagents and 4-8% SDS-PAGE.

ADDITIONAL INFO <https://www.bethyl.com/product/A301-305A>

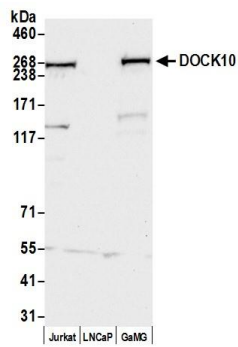
Use the link above to view SDS, a current list of citations, and other product specific information.

IP-western blot protocol https://www.bethyl.com/content/protocol_IP_WB

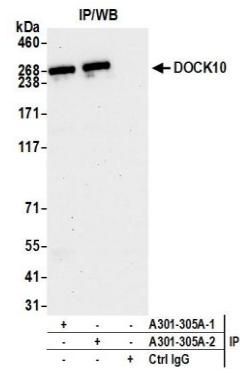
This document certifies that this product has met all of the quality control standards defined by Bethyl Laboratories, Inc.

Eric McIntush, PhD | Chief Scientific Officer

Date: June 28, 2019



Detection of human DOCK10 by western blot. *Samples:* Whole cell lysate (50 μ g) from Jurkat, LNCaP, and GaMG cells prepared using NETN lysis buffer. *Antibody:* Affinity purified rabbit anti-DOCK10 antibody A301-305A (lot A301-305A-2) used for WB at 0.1 μ g/ml. *Detection:* Chemiluminescence with an exposure time of 10 seconds.



Detection of human DOCK10 by western blot of immunoprecipitates. *Samples:* Whole cell lysate (1.0 mg per IP reaction; 20% of IP loaded) from Jurkat cells prepared using NETN lysis buffer. *Antibodies:* Affinity purified rabbit anti-DOCK10 antibody A301-305A (lot A301-305A-2) used for IP at 6 μ g per reaction. DOCK10 was also immunoprecipitated by a previous lot of this antibody (lot A301-305A-1). For blotting immunoprecipitated DOCK10, A301-305A was used at 0.1 μ g/ml. *Detection:* Chemiluminescence with an exposure time of 30 seconds.