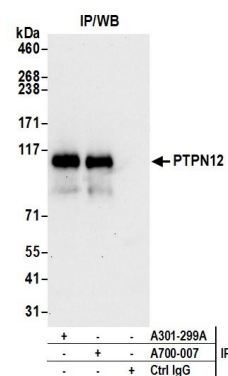


**Detection of human PTPN12 by western blot.** *Samples:* Whole cell lysate from HeLa (5, 15 and 50 µg) and HEK293T (T; 50 µg) cells. *Antibodies:* Affinity purified rabbit anti-PTPN12 antibody A301-299A used for WB at 0.04 µg/ml. *Detection:* Chemiluminescence with exposure time of 30 seconds.



**Detection of human PTPN12 by western blot of immunoprecipitation.** *Samples:* Whole cell lysate (0.5 mg per IP reaction; 20% of IP loaded) from HeLa cells prepared using NETN lysis buffer. *Antibodies:* Affinity purified rabbit anti-PTPN12 antibody A301-299A used for IP at 3 µg/mg lysate. PTPN12 was also immunoprecipitated by rabbit anti-PTPN12 recombinant monoclonal antibody [BL-5-2F8] (A700-007). For blotting immunoprecipitated PTPN12, A700-007 was used at 1:1000. *Detection:* Chemiluminescence with an exposure time time of 30 seconds.