

CEP72 Antibody

Rabbit Polyclonal

Antigen Affinity Purified

Protein ID NP_060610.2

Catalog No. A301-297A

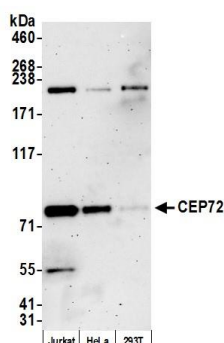
GeneID 55722

Lot No. A301-297A-2

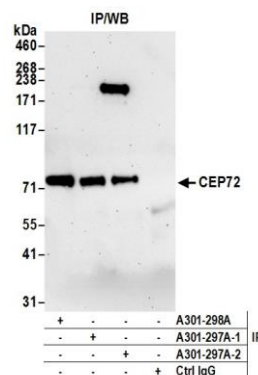


APPLICATIONS	WB, IP
SPECIES REACTIVITY	Human
AMOUNT	100 µl
CONCENTRATION	1000 µg/ml
STORAGE/SHELF LIFE	2 – 8° C / 1 year from date of receipt
PHYSICAL STATE	Liquid
BUFFER	Tris-citrate/phosphate buffer, pH 7 to 8 containing 0.09% Sodium Azide
ISOTYPE	IgG
ORIGIN	USA
PRODUCTION PROCEDURES	Antibody was affinity purified using an epitope specific to CEP72 immobilized on solid support. The epitope recognized by A301-297A maps to a region between residue 150 and 200 of centrosomal protein 72kDa using the numbering given in entry NP_060610.2 (GeneID 55722). Immunoglobulin concentration was determined by extinction coefficient: absorbance at 280 nm of 1.4 equals 1.0 mg of IgG.
APPLICATIONS	Centrifuge tube to remove product from lid. Optimal working dilutions should be determined experimentally by the investigator. Prepare working dilution immediately before use. Western Blot 1:10,000 – 1:25,000 Immunoprecipitation 2 – 10 µg/mg lysate
APPLICATION NOTES	Western blot of immunoprecipitates performed using Normal Pig Serum (Cat. No. S100-020), Goat anti-Rabbit Light Chain HRP Conjugate (Cat. No. A120-113P) and 4-8% SDS-PAGE (link to IP-western blot protocol in Additional Info section below). Western blot of lysates performed using standard western blot reagents and 4-8% SDS-PAGE.
ADDITIONAL INFO	https://www.bethyl.com/product/A301-297A Use the link above to view SDS, a current list of citations, and other product specific information. IP-western blot protocol https://www.bethyl.com/content/protocol_IP_WB

This document certifies that this product has met all of the quality control standards defined by Bethyl Laboratories, Inc.
Eric McIntush, PhD | Chief Scientific Officer Date: August 13, 2019



Detection of human CEP72 by western blot. *Samples:* Whole cell lysate (15 µg) from Jurkat, HeLa, and HEK293T cells prepared using NETN lysis buffer. *Antibody:* Affinity purified rabbit anti-CEP72 antibody A301-297A (lot A301-297A-2) used for WB at 0.04 µg/ml. *Detection:* Chemiluminescence with an exposure time of 3 minutes.



Detection of human CEP72 by western blot of immunoprecipitates. *Samples:* Whole cell lysate (1.0 mg per IP reaction; 20% of IP loaded) from Jurkat cells prepared using NETN lysis buffer. *Antibodies:* Affinity purified rabbit anti-CEP72 antibody A301-297A (lot A301-297A-2) used for IP at 6 µg per reaction. CEP72 was also immunoprecipitated by a previous lot of this antibody (lot A301-297A-1) and rabbit anti-CEP72 antibody A301-298A. For blotting immunoprecipitated CEP72, A301-297A was used at 0.04 µg/ml. *Detection:* Chemiluminescence with an exposure time of 75 seconds.