

SRGAP1 / ARHGAP13 Antibody

Rabbit Polyclonal

Antigen Affinity Purified Protein ID NP_065813.1
Catalog No. A301-285A GeneID 57522
Lot No. A301-285A-1



APPLICATIONS IP
SPECIES REACTIVITY Human
AMOUNT 100 μ l
CONCENTRATION 1000 μ g/ml
STORAGE/SHELF LIFE 2 - 8° C / 1 year from date of receipt
PHYSICAL STATE Liquid
BUFFER Tris-citrate/phosphate buffer, pH 7 to 8 containing 0.09% Sodium Azide
ISOTYPE IgG
ORIGIN USA
PRODUCTION PROCEDURES Antibody was affinity purified using an epitope specific to SRGAP1 / ARHGAP13 immobilized on solid support.

The epitope recognized by A301-285A maps to a region between residue 825 and 875 of human SLIT-ROBO Rho GTPase activating protein 1 (Rho GTPase-activating protein 13) using the numbering given in entry NP_065813.1 (GeneID 57522).

Immunoglobulin concentration was determined by extinction coefficient: absorbance at 280 nm of 1.4 equals 1.0 mg of IgG.

APPLICATIONS Centrifuge tube to remove product from lid. Optimal working dilutions should be determined experimentally by the investigator. Prepare working dilution immediately before use.

Western Blot Not recommended. Use rabbit anti-SRGAP1 / ARHGAP13 antibody A301-286A.

Immunoprecipitation 2 - 5 μ g/mg lysate

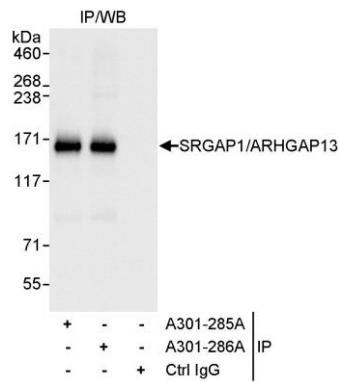
APPLICATION NOTES Western blot of immunoprecipitates performed using Normal Pig Serum (Cat. No. S100-020), Goat anti-Rabbit Light Chain HRP Conjugate (Cat. No. A120-113P) and 4-8% SDS-PAGE (link to IP-western blot protocol in Additional Info section below).

ADDITIONAL INFO <https://www.bethyl.com/product/A301-285A>

Use the link above to view SDS, a current list of citations, and other product specific information.

IP-western blot protocol: https://www.bethyl.com/content/protocol_IP_WB

This document certifies that this product has met all of the quality control standards defined by Bethyl Laboratories, Inc.
Eric McIntush, PhD | Chief Scientific Officer Date: June 21, 2019



Detection of human SRGAP1/ARHGAP13 by western blot of immunoprecipitates. *Samples:* Whole cell lysate (1 mg for IP, 20% of IP loaded) from HeLa cells. *Antibodies:* Affinity purified rabbit anti-SRGAP1/ARHGAP13 antibody A301-285A used for IP at 3 µg/mg lysate. SRGAP1/ARHGAP13 was also immunoprecipitated by rabbit anti-SRGAP1/ARHGAP13 antibody A301-286A, which recognizes a downstream epitope. For blotting immunoprecipitated SRGAP1/ARHGAP13, A301-286A was used at 1 µg/ml. *Detection:* Chemiluminescence with an exposure time of 1 second.