

NBS1 Antibody

Rabbit Polyclonal

Antigen Affinity Purified

Protein ID NP_038780.3

Catalog No. A301-284A

GeneID 27354

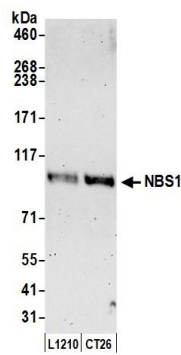
Lot No. A301-284A-2



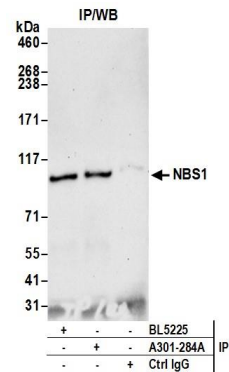
| | |
|------------------------------|--|
| APPLICATIONS | WB, IP |
| SPECIES REACTIVITY | Mouse |
| PRESUMED REACTIVITY | Based on 100% sequence identity, this antibody is predicted to react with Rat |
| AMOUNT | 100 µl |
| CONCENTRATION | 200 µg/ml |
| STORAGE/SHELF LIFE | 2 – 8° C / 1 year from date of receipt |
| PHYSICAL STATE | Liquid |
| BUFFER | Tris-buffered Saline containing 0.1% BSA and 0.09% Sodium Azide |
| ISOTYPE | IgG |
| ORIGIN | USA |
| PRODUCTION PROCEDURES | <p>Antibody was affinity purified using an epitope specific to NBS1 immobilized on solid support.</p> <p>The epitope recognized by A301-284A maps to a region between residue 701 and 751 of mouse Nibrin using the numbering given in entry NP_038780.3 (GeneID 27354).</p> <p>Immunoglobulin concentration was determined by extinction coefficient: absorbance at 280 nm of 1.4 equals 1.0 mg of IgG.</p> |
| APPLICATIONS | <p>Centrifuge tube to remove product from lid. Optimal working dilutions should be determined experimentally by the investigator. Prepare working dilution immediately before use.</p> <p>Western Blot 1:2,000 – 1:10,000</p> <p>Immunoprecipitation 2 – 5 µg/mg lysate</p> |
| APPLICATION NOTES | <p>Western blot of immunoprecipitates performed using Normal Pig Serum (Cat. No. S100-020), Goat anti-Rabbit Light Chain HRP Conjugate (Cat. No. A120-113P) and 4-8% SDS-PAGE (link to IP-western blot protocol in Additional Info section below).</p> <p>Western blot of lysates performed using standard western blot reagents and 4-8% SDS-PAGE.</p> |
| ADDITIONAL INFO | <p>https://www.bethyl.com/product/A301-284A</p> <p>Use the link above to view SDS, a current list of citations, and other product specific information.</p> <p>IP-western blot protocol: https://www.bethyl.com/content/protocol_IP_WB</p> |

This document certifies that this product has met all of the quality control standards defined by Bethyl Laboratories, Inc.
Eric McIntush, PhD | Chief Scientific Officer

Date: June 21, 2019



Detection of mouse NBS1 by western blot. Samples: Whole cell lysate (50 µg) from L1210 and CT26.WT cells prepared using NETN lysis buffer. Antibody: Affinity purified rabbit anti-NBS1 antibody A301-284A (lot A301-284A-2) used for WB at 0.1 µg/ml. Detection: Chemiluminescence with an exposure time of 3 minutes.



Detection of mouse NBS1 by western blot of immunoprecipitates. *Samples:* Whole cell lysate (1.0 mg per IP reaction; 20% of IP loaded) from L1210 cells prepared using NETN lysis buffer. *Antibodies:* Affinity purified rabbit anti-NBS1 antibody A301-284A (lot A301-284A-2) used for IP at 3 µg per reaction. NBS1 was also immunoprecipitated by rabbit anti-NBS1 antibody BL5225. For blotting immunoprecipitated NBS1, A301-284A was used at 1 µg/ml. *Detection:* Chemiluminescence with an exposure time of 30 seconds.