

p66beta/GATAD2B Antibody

Rabbit Polyclonal

Antigen Affinity Purified Protein ID NP_065750.1

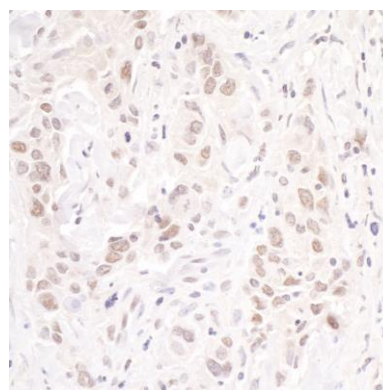
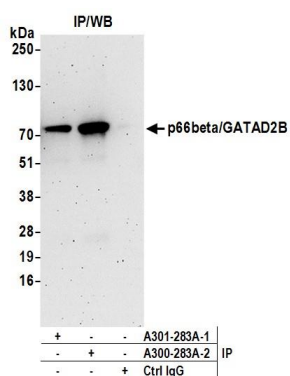
Catalog No. A301-283A GeneID 57459

Lot No. A301-283A-2



APPLICATIONS	IP, IHC
SPECIES REACTIVITY	Human
PRESUMED REACTIVITY	Based on 100% sequence identity, this antibody is predicted to react with Mouse
AMOUNT	100 µl
CONCENTRATION	1000 µg/ml
STORAGE/SHELF LIFE	2 - 8° C / 1 year from date of receipt
PHYSICAL STATE	Liquid
BUFFER	Tris-citrate/phosphate buffer, pH 7 to 8 containing 0.09% Sodium Azide
ISOTYPE	IgG
ORIGIN	USA
PRODUCTION PROCEDURES	Antibody was affinity purified using an epitope specific to p66beta/GATAD2B immobilized on solid support. The epitope recognized by A301-283A maps to a region between residue 543 and 593 of human transcription repressor p66 beta component of the MeCP1 complex (GATA zinc finger domain containing 2B) using the numbering given in entry NP_065750.1 (GeneID 57459). Immunoglobulin concentration was determined by extinction coefficient: absorbance at 280 nm of 1.4 equals 1.0 mg of IgG.
APPLICATIONS	Centrifuge tube to remove product from lid. Optimal working dilutions should be determined experimentally by the investigator. Prepare working dilution immediately before use. Western Blot Not recommended. Use rabbit anti-p66beta/GATAD2B antibody A301-281A or A301-282A. Immunoprecipitation 2 - 10 µg/mg lysate Immunohistochemistry 1:500 - 1:2,000. Epitope retrieval with citrate buffer pH 6.0 is recommended for FFPE tissue sections.
APPLICATION NOTES	Western blot of immunoprecipitates performed using Normal Pig Serum (Cat. No. S100-020), Goat anti-Rabbit Light Chain HRP Conjugate (Cat. No. A120-113P) and 4-8% SDS-PAGE (link to IP-western blot protocol in Additional Info section below).
IHC HUMAN CONTROLS	Breast Carcinoma, Colon Carcinoma, Non-Small Cell Lung Cancer, Ovarian Carcinoma
ADDITIONAL INFO	https://www.bethyl.com/product/A301-283A Use the link above to view SDS, a current list of citations, and other product specific information. IP-western blot protocol: https://www.bethyl.com/content/protocol_IP_WB

This document certifies that this product has met all of the quality control standards defined by Bethyl Laboratories, Inc.
Eric McIntush, PhD | Chief Scientific Officer Date: June 21, 2019



Detection of human p66beta/GATAD2B by western blot of immunoprecipitates. *Samples:* Whole cell lysate (0.5 or 1.0 mg per IP reaction; 20% of IP loaded) from HeLa cells prepared using NETN lysis buffer. *Antibodies:* Affinity purified rabbit anti-p66beta/GATAD2B antibody A301-283A (lot A301-283A-2) used for IP at 6 µg per reaction. p66beta/GATAD2B was also immunoprecipitated by rabbit anti-p66beta/GATAD2B antibody A301-283A-1. For blotting immunoprecipitated p66beta/GATAD2B, A301-282A was used at 1 µg/ml. *Detection:* Chemiluminescence with an exposure time of 3 minutes.

Detection of human p66beta/GATAD2B by immunohistochemistry. *Sample:* FFPE section of human breast carcinoma. *Antibody:* Affinity purified rabbit anti-p66beta/GATAD2B (Cat. No. A301-283A Lot2) used at a dilution of 1:1000 (1 µg/ml). *Detection:* DAB