

p66beta/GATAD2B Antibody

Rabbit Polyclonal

Antigen Affinity Purified Protein ID NP_065750.1
Catalog No. A301-281A GeneID 57459
Lot No. A301-281A-1



APPLICATIONS WB, IP
SPECIES REACTIVITY Human, Mouse
AMOUNT 100 µl
CONCENTRATION 200 µg/ml
STORAGE/SHELF LIFE 2 - 8° C / 1 year from date of receipt
PHYSICAL STATE Liquid
BUFFER Tris-buffered Saline containing 0.1% BSA and 0.09% Sodium Azide
ISOTYPE IgG
ORIGIN USA
PRODUCTION PROCEDURES Antibody was affinity purified using an epitope specific to p66beta/GATAD2B immobilized on solid support.

The epitope recognized by A301-281A maps to a region between residue 1 and 50 of human transcription repressor p66 beta component of the MeCP1 complex (GATA zinc finger domain containing 2B) using the numbering given in entry NP_065750.1 (GeneID 57459).

Immunoglobulin concentration was determined by extinction coefficient: absorbance at 280 nm of 1.4 equals 1.0 mg of IgG.

APPLICATIONS Centrifuge tube to remove product from lid. Optimal working dilutions should be determined experimentally by the investigator. Prepare working dilution immediately before use.

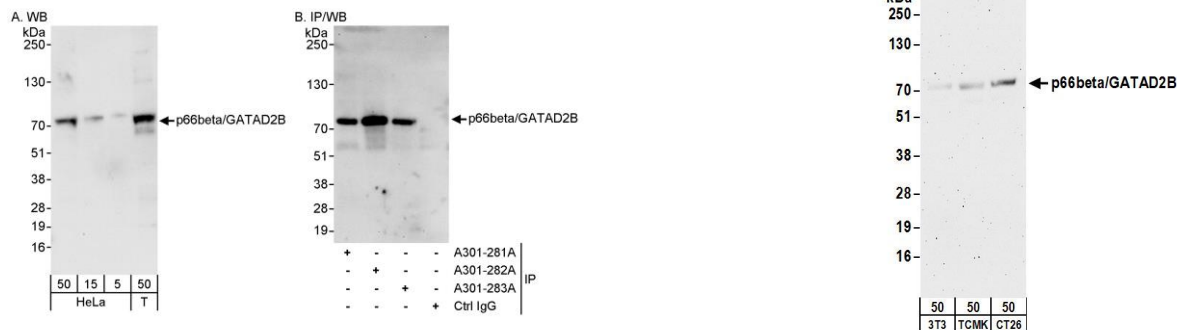
Western Blot 1:2,000 - 1:10,000
Immunoprecipitation 2 - 5 µg/mg lysate

APPLICATION NOTES Western blot of immunoprecipitates performed using Normal Pig Serum (Cat. No. S100-020), Goat anti-Rabbit Light Chain HRP Conjugate (Cat. No. A120-113P) and 4-8% SDS-PAGE (link to IP-western blot protocol in Additional Info section below).

Western blot of lysates performed using standard western blot reagents and 4-8% SDS-PAGE.

ADDITIONAL INFO <https://www.bethyl.com/product/A301-281A>
Use the link above to view SDS, a current list of citations, and other product specific information.
IP-western blot protocol: https://www.bethyl.com/content/protocol_IP_WB

This document certifies that this product has met all of the quality control standards defined by Bethyl Laboratories, Inc.
Eric McIntush, PhD | Chief Scientific Officer Date: June 21, 2019



Detection of human p66beta/GATAD2B by western blot and immunoprecipitation. *Samples:* Whole cell lysate from HeLa (5, 15 and 50 μg for WB; 1 mg for IP, 20% of IP loaded) and HEK293T (T; 50 μg) cells. *Antibodies:* Affinity purified rabbit anti-p66beta/GATAD2B antibody A301-281A used for WB at 0.04 μg/ml (A) and 1 μg/ml (B) and used for IP at 3 μg/mg lysate. p66beta/GATAD2B was also immunoprecipitated by rabbit anti-p66beta/GATAD2B antibodies A301-282A and A301-283A, which recognize downstream epitopes. *Detection:* Chemiluminescence with exposure times of 30 seconds (A and B).

Detection of mouse p66beta/GATAD2B by western blot. *Samples:* Whole cell lysate (50 μg) from NIH 3T3, TCMK-1, and CT26.WT cells. *Antibodies:* Affinity purified rabbit anti-p66beta/GATAD2B antibody A301-281A (lot A301-281A-1) used for WB at 0.5 μg/ml. *Detection:* Chemiluminescence with an exposure time of 3 minutes.