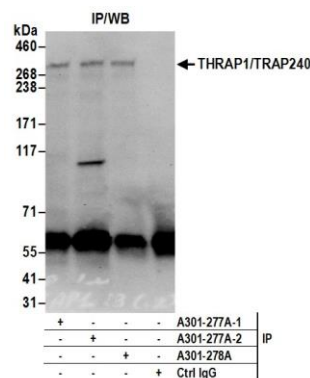


Detection of human THRAP1/TRAP240 by western blot.
Samples: Whole cell lysate (50 µg) from HeLa and HEK293T cells prepared using NETN lysis buffer. *Antibody:* Affinity purified rabbit anti-THRAP1/TRAP240 antibody A301-277A (lot A301-277A-2) used for WB at 0.1 µg/ml. *Detection:* Chemiluminescence with an exposure time of 3 minutes.



Detection of human THRAP1/TRAP240 by western blot of immunoprecipitates. *Samples:* Whole cell lysate (0.5 or 1.0 mg per IP reaction; 20% of IP loaded) from HeLa cells prepared using NETN lysis buffer. *Antibody:* Affinity purified rabbit anti-THRAP1/TRAP240 antibody A301-277A (lot A301-277A-2) used for IP at 6 µg per reaction. THRAP1/TRAP240 was also immunoprecipitated by a previous lot of this antibody (lot A301-277A-1) and rabbit anti-THRAP1/TRAP240 antibody A301-278A. For blotting immunoprecipitated THRAP1/TRAP240, A301-277A was used at 1 µg/ml. *Detection:* Chemiluminescence with an exposure time of 30 seconds.