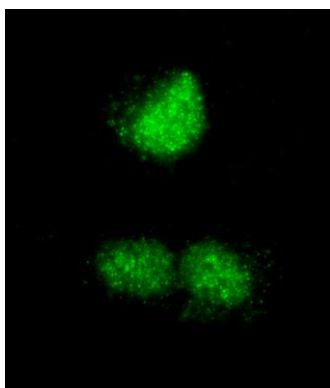


Detection of human and mouse RCOR3 by western blot (h&m) and immunoprecipitation (h). *Samples:* Whole cell lysate from HeLa (5, 15 and 50 μ g for WB; 1 mg for IP, 20% of IP loaded), HEK293T (T; 50 μ g) and mouse NIH 3T3 (M; 50 μ g) cells. *Antibodies:* Affinity purified rabbit anti-RCOR3 antibody A301-273A used for WB at 0.04 μ g/ml (A) and 1 μ g/ml (B) and used for IP at 3 μ g/mg lysate. RCOR3 was also immunoprecipitated by rabbit anti-RCOR3 antibody A301-272A, which recognizes an upstream epitope. *Detection:* Chemiluminescence with exposure times of 1 second (A) and 10 seconds (B).

Detection of human RCOR3 by immunohistochemistry. *Sample:* FFPE sections of human testicular seminoma (left) and breast carcinoma (right). *Antibody:* Affinity purified rabbit anti-RCOR3 (Cat. No. A301-273A Lot1) used at a dilution of 1:200 (1 μ g/ml) and 1:80 (2.5 μ g/ml). *Detection:* DAB and Red-fluorescent goat anti-rabbit IgG-heavy and light chain, cross-adsorbed Antibody DyLight® 594 Conjugated used at a dilution of 1:100



Detection of human RCOR3 by immunocytochemistry. *Sample:* FFPE section of NBF-fixed HeLa Cells *Antibody:* Affinity purified rabbit anti-RCOR3 (Cat. No. A300-273A Lot1) used at a dilution of 1:80 (2.5 μ g/ml). *Detection:* Green-fluorescent goat anti-rabbit IgG-heavy and light chain cross-adsorbed Antibody DyLight® 488 Conjugated used at a dilution of 1:100.