

# PTRF Antibody

Rabbit Polyclonal

Antigen Affinity Purified

Protein ID NP\_036364.2

Catalog No. A301-270A

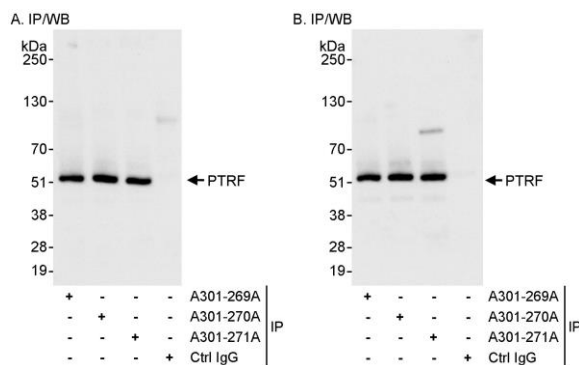
GeneID 284119

Lot No. A301-270A-1



<b>APPLICATIONS</b>	IP				
<b>SPECIES REACTIVITY</b>	Human				
<b>AMOUNT</b>	100 µl				
<b>CONCENTRATION</b>	1000 µg/ml				
<b>STORAGE/SHELF LIFE</b>	2 – 8° C / 1 year from date of receipt				
<b>PHYSICAL STATE</b>	Liquid				
<b>BUFFER</b>	Tris-citrate/phosphate buffer, pH 7 to 8 containing 0.09% Sodium Azide				
<b>ISOTYPE</b>	IgG				
<b>ORIGIN</b>	USA				
<b>PRODUCTION PROCEDURES</b>	<p>Antibody was affinity purified using an epitope specific to PTRF immobilized on solid support.</p> <p>The epitope recognized by A301-270A maps to a region between residue 150 and 200 of human RNA polymerase I and transcript release factor using the numbering given in entry NP_036364.2 (GeneID 284119).</p> <p>Immunoglobulin concentration was determined by extinction coefficient: absorbance at 280 nm of 1.4 equals 1.0 mg of IgG.</p>				
<b>APPLICATIONS</b>	<p>Centrifuge tube to remove product from lid. Optimal working dilutions should be determined experimentally by the investigator. Prepare working dilution immediately before use.</p> <table><tr><td>Western Blot</td><td>Not recommended. Use rabbit anti-PTRF antibody A301-269A or A301-271A.</td></tr><tr><td>Immunoprecipitation</td><td>2 – 5 µg/mg lysate</td></tr></table>	Western Blot	Not recommended. Use rabbit anti-PTRF antibody A301-269A or A301-271A.	Immunoprecipitation	2 – 5 µg/mg lysate
Western Blot	Not recommended. Use rabbit anti-PTRF antibody A301-269A or A301-271A.				
Immunoprecipitation	2 – 5 µg/mg lysate				
<b>APPLICATION NOTES</b>	Western blot of immunoprecipitates performed using Normal Pig Serum (Cat. No. S100-020), Goat anti-Rabbit Light Chain HRP Conjugate (Cat. No. A120-113P) and 4-20% SDS-PAGE (link to IP-western blot protocol in Additional Info section below).				
<b>ADDITIONAL INFO</b>	<p><a href="https://www.bethyl.com/product/A301-270A">https://www.bethyl.com/product/A301-270A</a></p> <p>Use the link above to view SDS, a current list of citations, and other product specific information. IP-western blot protocol: <a href="https://www.bethyl.com/content/protocol_IP_WB">https://www.bethyl.com/content/protocol_IP_WB</a></p>				

This document certifies that this product has met all of the quality control standards defined by Bethyl Laboratories, Inc.  
Eric McIntush, PhD | Chief Scientific Officer Date: June 21, 2019



**Detection of human PTRF by western blot of immunoprecipitates.** *Samples:* Whole cell lysate (1 mg for IP, 20% of IP loaded) from HeLa cells. *Antibodies:* Affinity purified rabbit anti-PTRF antibody A301-270A used for IP at 3 µg/mg lysate. PTRF was also immunoprecipitated by rabbit anti-PTRF antibodies A301-269A and A301-271A, which recognize other epitopes. For blotting immunoprecipitated PTRF, A301-269A (A) and A301-271A (B) were used at 1 µg/ml. *Detection:* Chemiluminescence with exposure times of 3 seconds (A and B).