

PAK1 Antibody

Rabbit Polyclonal

Antigen Affinity Purified

Protein ID NP_002567.3

Catalog No. A301-260A

GeneID 5058

Lot No. A301-260A-1



APPLICATIONS	IP
SPECIES REACTIVITY	Human
PRESUMED REACTIVITY	Based on 100% sequence identity, this antibody is predicted to react with Mouse, Rat and Bovine
AMOUNT	100 μ l
CONCENTRATION	1000 μ g/ml
STORAGE/SHELF LIFE	2 – 8° C / 1 year from date of receipt
PHYSICAL STATE	Liquid
BUFFER	Tris-citrate/phosphate buffer, pH 7 to 8 containing 0.09% Sodium Azide
ISOTYPE	IgG
ORIGIN	USA
PRODUCTION PROCEDURES	Antibody was affinity purified using an epitope specific to PAK1 immobilized on solid support.

The epitope recognized by A301-260A maps to a region between residue 40 and 90 of human p21/Cdc42/Rac1-activated kinase 1 using the numbering given in entry NP_002567.3 (GeneID 5058).

Immunoglobulin concentration was determined by extinction coefficient: absorbance at 280 nm of 1.4 equals 1.0 mg of IgG.

APPLICATIONS

Centrifuge tube to remove product from lid. Optimal working dilutions should be determined experimentally by the investigator. Prepare working dilution immediately before use.

Western Blot Not recommended. Use rabbit anti-PAK1 antibody A301-259A.

Immunoprecipitation 2 – 5 μ g/mg lysate

APPLICATION NOTES

Western blot of immunoprecipitates performed using Normal Pig Serum (Cat. No. S100-020), Goat anti-Rabbit Light Chain HRP Conjugate (Cat. No. A120-113P) and 4-20% SDS-PAGE (link to IP-western blot protocol in Additional Info section below).

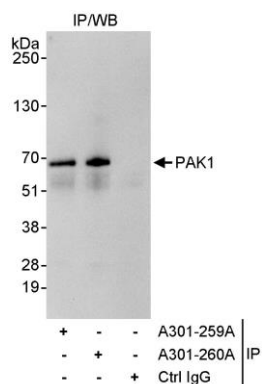
ADDITIONAL INFO

<https://www.bethyl.com/product/A301-260A>

Use the link above to view SDS, a current list of citations, and other product specific information.

IP-western blot protocol: https://www.bethyl.com/content/protocol_IP_WB

This document certifies that this product has met all of the quality control standards defined by Bethyl Laboratories, Inc.
Eric McIntush, PhD | Chief Scientific Officer Date: June 21, 2019



Detection of human PAK1 by western blot of immunoprecipitates. *Samples:* Whole cell lysate (1 mg for IP, 20% of IP loaded) from HeLa cells. *Antibodies:* Affinity purified rabbit anti-PAK1 antibody A301-260A used for IP at 3 $\mu\text{g}/\text{mg}$ lysate. PAK1 was also immunoprecipitated by rabbit anti-PAK1 antibody A301-259A, which recognizes an upstream epitope. For blotting immunoprecipitated PAK1, A301-259A was used at 0.1 $\mu\text{g}/\text{ml}$. *Detection:* Chemiluminescence with an exposure time of 10 seconds.