

# ILK Antibody

Rabbit Polyclonal

Antigen Affinity Purified

Protein ID NP\_004508.1

Catalog No. A301-258A

GeneID 3611

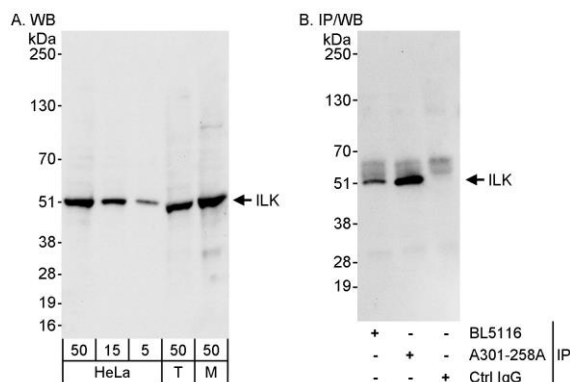
Lot No. A301-258A-1



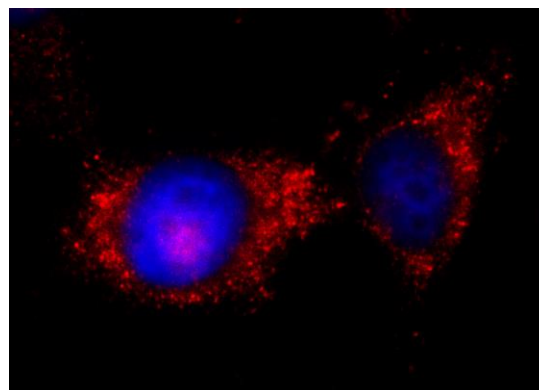
<b>APPLICATIONS</b>	WB, IP, ICC-IF						
<b>SPECIES REACTIVITY</b>	Human, Mouse						
<b>PRESUMED REACTIVITY</b>	Based on 100% sequence identity, this antibody is predicted to react with Rat, Bovine, Guinea pig_10141 and Orangutan						
<b>AMOUNT</b>	100 µl						
<b>CONCENTRATION</b>	200 µg/ml						
<b>STORAGE/SHELF LIFE</b>	2 – 8° C / 1 year from date of receipt						
<b>PHYSICAL STATE</b>	Liquid						
<b>BUFFER</b>	Tris-buffered Saline containing 0.1% BSA and 0.09% Sodium Azide						
<b>ISOTYPE</b>	IgG						
<b>ORIGIN</b>	USA						
<b>PRODUCTION PROCEDURES</b>	<p>Antibody was affinity purified using an epitope specific to ILK immobilized on solid support.</p> <p>The epitope recognized by A301-258A maps to a region between residue 402 and 451 of human integrin-linked kinase using the numbering given in entry NP_004508.1 (GeneID 3611).</p> <p>Immunoglobulin concentration was determined by extinction coefficient: absorbance at 280 nm of 1.4 equals 1.0 mg of IgG.</p>						
<b>APPLICATIONS</b>	<p>Centrifuge tube to remove product from lid. Optimal working dilutions should be determined experimentally by the investigator. Prepare working dilution immediately before use.</p> <table><tr><td>Western Blot</td><td>1:2,000 – 1:10,000</td></tr><tr><td>Immunoprecipitation</td><td>2 – 5 µg/mg lysate</td></tr><tr><td>Immunofluorescence (ICC)</td><td>1:100 – 1:500. Acetone fixation is recommended. Permeabilization is not recommended. Formaldehyde fixation is not recommended.</td></tr></table>	Western Blot	1:2,000 – 1:10,000	Immunoprecipitation	2 – 5 µg/mg lysate	Immunofluorescence (ICC)	1:100 – 1:500. Acetone fixation is recommended. Permeabilization is not recommended. Formaldehyde fixation is not recommended.
Western Blot	1:2,000 – 1:10,000						
Immunoprecipitation	2 – 5 µg/mg lysate						
Immunofluorescence (ICC)	1:100 – 1:500. Acetone fixation is recommended. Permeabilization is not recommended. Formaldehyde fixation is not recommended.						
<b>APPLICATION NOTES</b>	<p>Western blot of immunoprecipitates performed using Normal Pig Serum (Cat. No. S100-020), Goat anti-Rabbit Light Chain HRP Conjugate (Cat. No. A120-113P) and 4-20% SDS-PAGE (link to IP-western blot protocol in Additional Info section below).</p> <p>Western blot of lysates performed using standard western blot reagents and 4-20% SDS-PAGE.</p>						
<b>IHC HUMAN CONTROLS</b>	HeLa Cells						
<b>ADDITIONAL INFO</b>	<p><a href="https://www.bethyl.com/product/A301-258A">https://www.bethyl.com/product/A301-258A</a></p> <p>Use the link above to view SDS, a current list of citations, and other product specific information.</p> <p>IP-western blot protocol: <a href="https://www.bethyl.com/content/protocol_IP_WB">https://www.bethyl.com/content/protocol_IP_WB</a></p>						

This document certifies that this product has met all of the quality control standards defined by Bethyl Laboratories, Inc.  
Eric McIntush, PhD | Chief Scientific Officer

Date: June 21, 2019



**Detection of human and mouse ILK by western blot (h&m) and immunoprecipitation (h).** *Samples:* Whole cell lysate from HeLa (5, 15 and 50  $\mu$ g for WB; 1 mg for IP, 20% of IP loaded), HEK293T (T; 50  $\mu$ g), and mouse NIH 3T3 (M; 50  $\mu$ g) cells. *Antibodies:* Affinity purified rabbit anti-ILK antibody A301-258A used for WB at 0.04  $\mu$ g/ml (A) and 1  $\mu$ g/ml (B) and used for IP at 3  $\mu$ g/mg lysate. ILK was also immunoprecipitated by rabbit anti-ILK antibody BL5116, which recognizes an upstream epitope. *Detection:* Chemiluminescence with exposure times of 10 seconds (A and B).



**Detection of human ILK by immunocytochemistry.** *Sample:* Acetone-fixed asynchronous HeLa cells. *Antibody:* Affinity purified rabbit anti-ILK (Cat. No.A301-258A Lot1) used at a dilution of 1:100 (2 $\mu$ g/ml). *Detection:* Red-fluorescent goat anti-rabbit IgG highly cross-adsorbed Antibody used at a dilution of 1:100.