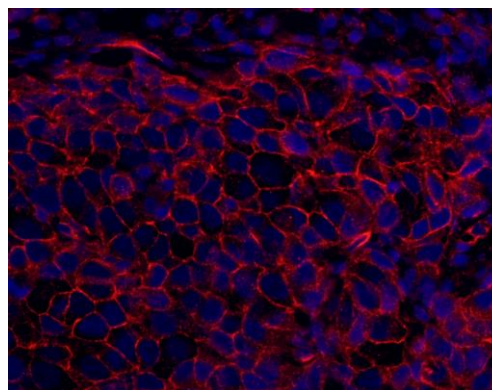
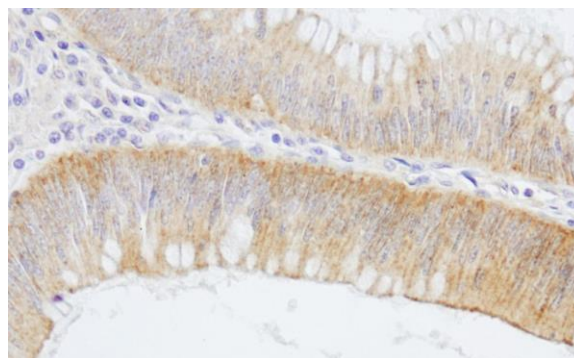


Detection of human and mouse SPTAN1 /Alpha II-Spectrin by western blot. *Samples:* Whole cell lysate from HeLa (5, 15 and 50 μg), HEK293T (T; 50 μg), and mouse NIH 3T3 (M; 50 μg) cells. *Antibody:* Affinity purified rabbit anti-SPTAN1/Alpha II-Spectrin antibody A301-249A used for WB at 0.04 μg/ml. *Detection:* Chemiluminescence with an exposure time of 3 seconds.



Detection of human SPTAN1 /Alpha II-Spectrin by immunohistochemistry. *Sample:* FFPE section of human breast carcinoma. *Antibody:* Affinity purified rabbit anti-SPTAN1 /Alpha II-Spectrin (Cat. No. A301-249A Lot1) used at a dilution of 1:200 (1 μg/ml). *Detection:* Red-fluorescent goat anti-rabbit IgG-heavy and light chain cross-adsorbed Antibody DyLight® 594 Conjugated used at a dilution of 1:100.



Detection of human SPTAN1 /Alpha II-Spectrin by immunohistochemistry. *Sample:* FFPE section of human colon carcinoma. *Antibody:* Affinity purified rabbit anti-SPTAN1 /Alpha II-Spectrin (Cat. No. A301-249A Lot1) used at a dilution of 1:200 (1 μg/ml). *Detection:* DAB