

SPTAN1 /Alpha II-spectrin Antibody

Rabbit Polyclonal

Antigen Affinity Purified Protein ID NP_003118.1

Catalog No. A301-248A GeneID 6709

Lot No. A301-248A-2



APPLICATIONS	WB, IHC
SPECIES REACTIVITY	Human, Mouse
PRESUMED REACTIVITY	Based on 100% sequence identity, this antibody is predicted to react with Rat and Chicken
AMOUNT	100 µl
CONCENTRATION	1000 µg/ml
STORAGE/SHELF LIFE	2 - 8° C / 1 year from date of receipt
PHYSICAL STATE	Liquid
BUFFER	Tris-citrate/phosphate buffer, pH 7 to 8 containing 0.09% Sodium Azide
ISOTYPE	IgG
ORIGIN	USA
PRODUCTION PROCEDURES	Antibody was affinity purified using an epitope specific to SPTAN1 /Alpha II-spectrin immobilized on solid support.

The epitope recognized by A301-248A maps to a region between residue 1000 and 1050 of human spectrin, alpha, non-erythrocytic 1 using the numbering given in entry NP_003118.1 (GeneID 6709).

Immunoglobulin concentration was determined by extinction coefficient: absorbance at 280 nm of 1.4 equals 1.0 mg of IgG.

APPLICATIONS Centrifuge tube to remove product from lid. Optimal working dilutions should be determined experimentally by the investigator. Prepare working dilution immediately before use.

Western Blot 1:2,000 - 1:10,000

Immunoprecipitation Not recommended

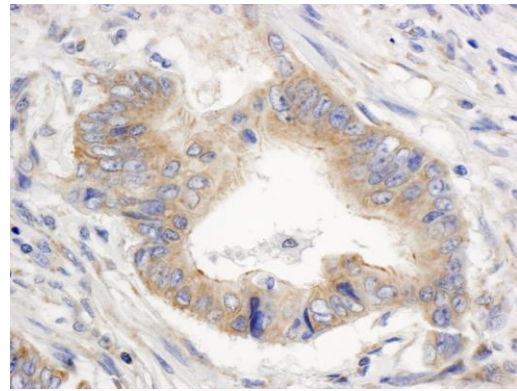
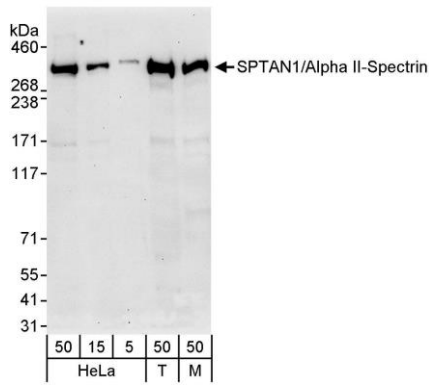
Immunohistochemistry 1:500 - 1:2,000. Epitope retrieval with citrate buffer pH 6.0 is recommended for FFPE tissue sections.

APPLICATION NOTES Western blot of lysates performed using standard western blot reagents and 4-8% SDS-PAGE.

IHC HUMAN CONTROLS Colon Carcinoma, Ovarian Carcinoma

ADDITIONAL INFO <https://www.bethyl.com/product/A301-248A>
Use the link above to view SDS, a current list of citations, and other product specific information.

This document certifies that this product has met all of the quality control standards defined by Bethyl Laboratories, Inc.
Eric McIntush, PhD | Chief Scientific Officer Date: June 21, 2019



Detection of human and mouse SPTAN1/Alpha II-Spectrin by western blot. *Samples:* Whole cell lysate from HeLa (5, 15 and 50 µg), HEK293T (T; 50 µg), and mouse NIH 3T3 (M; 50 µg) cells. *Antibody:* Affinity purified rabbit anti-SPTAN1/Alpha II-Spectrin antibody A301-248A (lot A301-248A-2) used for WB at 0.2 µg/ml. *Detection:* Chemiluminescence with an exposure time of 30 seconds.

Detection of human SPTAN1/Alpha II-Spectrin by immunohistochemistry. *Sample:* FFPE section of human colon carcinoma. *Antibody:* Affinity purified rabbit anti-SPTAN1/Alpha II-Spectrin (Cat. No. A301-248A Lot2) used at a dilution of 1:1,000 (1 µg/ml). *Detection:* DAB