

PolD3/p66 Antibody

Rabbit Polyclonal

Antigen Affinity Purified

Protein ID NP_006582.1

Catalog No. A301-243A

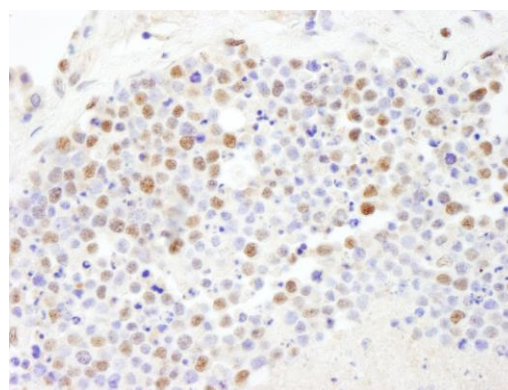
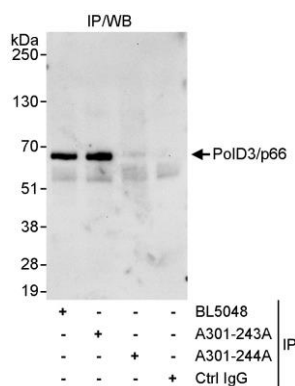
GeneID 10714

Lot No. A301-243A-1



APPLICATIONS	IP, IHC
SPECIES REACTIVITY	Human
AMOUNT	100 µl
CONCENTRATION	1000 µg/ml
STORAGE/SHELF LIFE	2 - 8° C / 1 year from date of receipt
PHYSICAL STATE	Liquid
BUFFER	Tris-citrate/phosphate buffer, pH 7 to 8 containing 0.09% Sodium Azide
ISOTYPE	IgG
ORIGIN	USA
PRODUCTION PROCEDURES	Antibody was affinity purified using an epitope specific to PolD3/p66 immobilized on solid support. The epitope recognized by A301-243A maps to a region between residue 325 and 375 of human DNA polymerase delta, subunit 3 using the numbering given in entry NP_006582.1 (GeneID 10714). Immunoglobulin concentration was determined by extinction coefficient: absorbance at 280 nm of 1.4 equals 1.0 mg of IgG.
APPLICATIONS	Centrifuge tube to remove product from lid. Optimal working dilutions should be determined experimentally by the investigator. Prepare working dilution immediately before use. Western Blot Not recommended. Use rabbit anti-PolD3/p66 antibody A301-244A. Immunoprecipitation 2 - 5 µg/mg lysate Immunohistochemistry 1:500 - 1:2,000. Epitope retrieval with citrate buffer pH 6.0 is recommended for FFPE tissue sections.
APPLICATION NOTES	Western blot of immunoprecipitates performed using Normal Pig Serum (Cat. No. S100-020), Goat anti-Rabbit Light Chain HRP Conjugate (Cat. No. A120-113P) and 4-20% SDS-PAGE (link to IP-western blot protocol in Additional Info section below).
IHC HUMAN CONTROLS	Breast Carcinoma, Ovarian Carcinoma, Prostate Carcinoma, Small Cell Lung Cancer
ADDITIONAL INFO	https://www.bethyl.com/product/A301-243A Use the link above to view SDS, a current list of citations, and other product specific information. IP-western blot protocol: https://www.bethyl.com/content/protocol_IP_WB

This document certifies that this product has met all of the quality control standards defined by Bethyl Laboratories, Inc.
Eric McIntush, PhD | Chief Scientific Officer Date: June 21, 2019



Detection of human PolD3/p66 by western blot of immunoprecipitates. *Samples:* Whole cell lysate (1 mg for IP, 20% of IP loaded) from HeLa cells. *Antibodies:* Affinity purified rabbit anti-PolD3/p66 antibody A301-243A used for IP at 3 µg/mg lysate. PolD3/p66 was also immunoprecipitated by rabbit anti-PolD3/p66 antibody BL5048, which recognizes an upstream epitope. For blotting immunoprecipitated PolD3/p66, A301-244A was used at 1 µg/ml. *Detection:* Chemiluminescence with an exposure time of 30 seconds.

Detection of human PolD3/p66 by immunohistochemistry. *Sample:* FFPE section of human small cell lung cancer. *Antibody:* Affinity purified rabbit anti-PolD3/p66 (Cat. No. A301-243A Lot1) used at a dilution of 1:1,000 (1µg/ml). *Detection:* DAB