

# GTF3C5/TFIIIC63 Antibody

Rabbit Polyclonal

Antigen Affinity Purified

Protein ID NP\_036219.1

Catalog No. A301-242A

GeneID 9328

Lot No. A301-242A-2



<b>APPLICATIONS</b>	WB, IP, IHC
<b>SPECIES REACTIVITY</b>	Human, Mouse
<b>AMOUNT</b>	100 µl
<b>CONCENTRATION</b>	200 µg/ml
<b>STORAGE/SHELF LIFE</b>	2 – 8° C / 1 year from date of receipt
<b>PHYSICAL STATE</b>	Liquid
<b>BUFFER</b>	Tris-buffered Saline containing 0.1% BSA and 0.09% Sodium Azide
<b>ISOTYPE</b>	IgG
<b>ORIGIN</b>	USA
<b>PRODUCTION PROCEDURES</b>	Antibody was affinity purified using an epitope specific to GTF3C5/TFIIIC63 immobilized on solid support.

The epitope recognized by A301-242A maps to a region between residue 469 and 519 of human general transcription factor 3C polypeptide 5 (Transcription factor IIIC 63 kDa subunit) using the numbering given in entry NP\_036219.1 (GeneID 9328).

Immunoglobulin concentration was determined by extinction coefficient: absorbance at 280 nm of 1.4 equals 1.0 mg of IgG.

**APPLICATIONS** Centrifuge tube to remove product from lid. Optimal working dilutions should be determined experimentally by the investigator. Prepare working dilution immediately before use.

Western Blot 1:2,000 – 1:10,000

Immunoprecipitation 2 – 10 µg/mg lysate

Immunohistochemistry 1:200 – 1:1,000. Epitope retrieval with citrate buffer pH 6.0 is recommended for FFPE tissue sections.

**APPLICATION NOTES** Western blot of immunoprecipitates performed using Normal Pig Serum (Cat. No. S100-020), Goat anti-Rabbit Light Chain HRP Conjugate (Cat. No. A120-113P) and 4-20% SDS-PAGE (link to IP-western blot protocol in Additional Info section below).

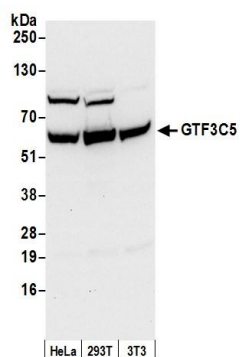
**IHC HUMAN CONTROLS** Western blot of lysates performed using standard western blot reagents and 4-20% SDS-PAGE. Anaplastic Thyroid Carcinoma, Breast Carcinoma, Metastatic Lymph Node, Ovarian Carcinoma, Prostate Carcinoma, Small Cell Lung Cancer, Testicular Seminoma

**IHC MOUSE CONTROLS** Colon Carcinoma CT26, Renal Cell Carcinoma, Skin, Teratoma

**ADDITIONAL INFO** <https://www.bethyl.com/product/A301-242A>

Use the link above to view SDS, a current list of citations, and other product specific information. IP-western blot protocol: [https://www.bethyl.com/content/protocol\\_IP\\_WB](https://www.bethyl.com/content/protocol_IP_WB)

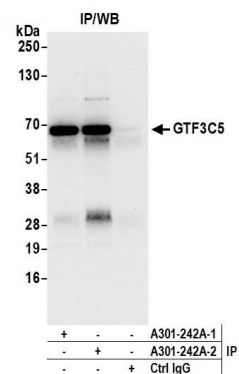
This document certifies that this product has met all of the quality control standards defined by Bethyl Laboratories, Inc.  
Eric McIntush, PhD | Chief Scientific Officer Date: June 21, 2019


**Detection of human and mouse GTF3C5 by western blot.**

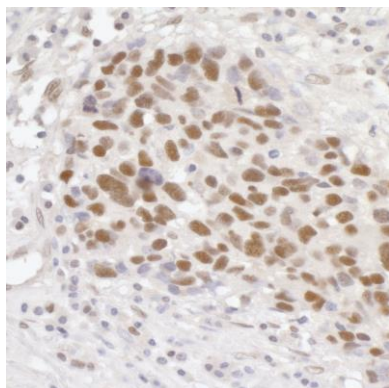
*Samples:* Whole cell lysate (50 µg) from HeLa, HEK293T, and mouse NIH 3T3 cells prepared using NETN lysis buffer.

*Antibody:* Affinity purified rabbit anti-GTF3C5 antibody A301-242A (lot A301-242A-2) used for WB at 0.1 µg/ml.

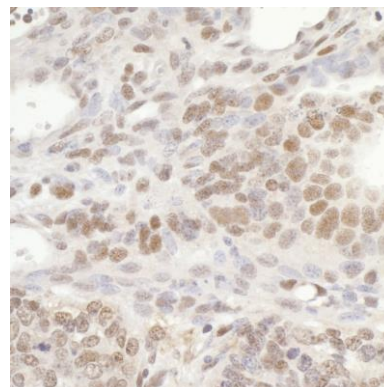
*Detection:* Chemiluminescence with an exposure time of 10 seconds.


**Detection of human GTF3C5 by western blot of immunoprecipitates.**

*Samples:* Whole cell lysate (0.5 or 1.0 mg per IP reaction; 20% of IP loaded) from HEK293T cells prepared using NETN lysis buffer. *Antibodies:* Affinity purified rabbit anti-GTF3C5 antibody A301-242A (lot A301-242A-2) used for IP at 6 µg per reaction. GTF3C5 was also immunoprecipitated by a previous lot of this antibody (lot A301-242A-1). For blotting immunoprecipitated GTF3C5, A301-242A was used at 0.4 µg/ml. *Detection:* Chemiluminescence with an exposure time of 10 seconds.



**Detection of human GTF3C5/TFIIIC63 by immunohistochemistry.** *Sample:* FFPE section of human breast carcinoma. *Antibody:* Affinity purified rabbit anti-GTF3C5/TFIIIC63 (Cat. No. A301-242A Lot2) used at a dilution of 1:200 (1 µg/ml). *Detection:* DAB



**Detection of mouse GTF3C5/TFIIIC63 by immunohistochemistry.** *Sample:* FFPE section of mouse teratoma. *Antibody:* Affinity purified rabbit anti-GTF3C5/TFIIIC63 (Cat. No. A301-242A Lot2) used at a dilution of 1:200 (1 µg/ml). *Detection:* DAB