

CHD8 Antibody

Rabbit Polyclonal

Antigen Affinity Purified

Protein ID NP_065971.2

Catalog No. A301-224A

GeneID 57680

Lot No. A301-224A-3



APPLICATIONS	WB, IP, IHC
SPECIES REACTIVITY	Human
AMOUNT	100 µl
CONCENTRATION	1000 µg/ml
STORAGE/SHELF LIFE	2 – 8° C / 1 year from date of receipt
PHYSICAL STATE	Liquid
BUFFER	Tris-citrate/phosphate buffer, pH 7 to 8 containing 0.09% Sodium Azide
ISOTYPE	IgG
ORIGIN	USA
PRODUCTION PROCEDURES	Antibody was affinity purified using an epitope specific to CHD8 immobilized on solid support.

The epitope recognized by A301-224A maps to a region between residue 325 and 350 of human chromodomain helicase DNA binding protein 8 using the numbering given in entry NP_065971.2 (GeneID 57680).

Immunoglobulin concentration was determined by extinction coefficient: absorbance at 280 nm of 1.4 equals 1.0 mg of IgG.

APPLICATIONS Centrifuge tube to remove product from lid. Optimal working dilutions should be determined experimentally by the investigator. Prepare working dilution immediately before use.

Western Blot 1:2,000 – 1:10,000

Immunoprecipitation 2 – 10 µg/mg lysate

Immunohistochemistry 1:1,000 to 1:5,000. Epitope retrieval with citrate buffer pH6.0 is recommended for FFPE tissue sections.

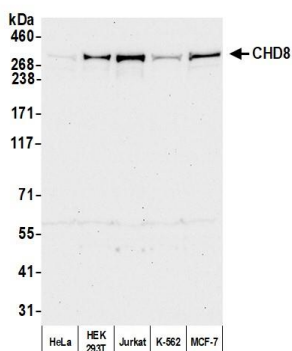
IHC HUMAN CONTROLS Breast Carcinoma, Ovarian Carcinoma

ADDITIONAL INFO <https://www.bethyl.com/product/A301-224A>

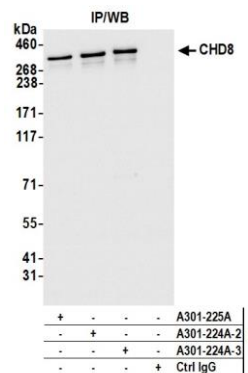
Use the link above to view SDS, a current list of citations, and other product specific information.

IP-western blot protocol: https://www.bethyl.com/content/protocol_IP_WB

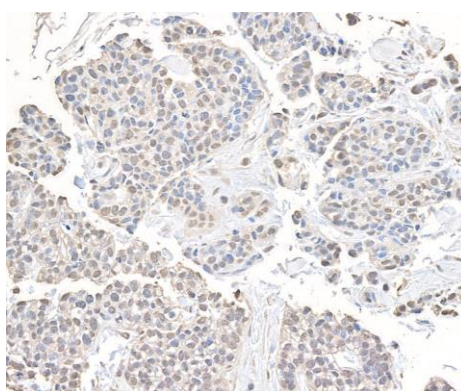
This document certifies that this product has met all of the quality control standards defined by Bethyl Laboratories, Inc.
Brian McWilliams, PhD Date: July 28, 2021



Detection of human CHD8 by western blot. *Samples:* Whole cell lysate (50 µg) from HeLa, HEK293T, Jurkat, K-562, and MCF-7 cells prepared using NETN lysis buffer. ***Antibody:*** Affinity purified rabbit anti-CHD8 antibody (A301-224A lot 3) used for WB at 0.1 µg/ml. ***Detection:*** Chemiluminescence with an exposure time of 30 seconds.



Detection of human CHD8 by western blot of immunoprecipitates. *Samples:* Whole cell lysate (1.0 mg per IP reaction; 20% of IP loaded) from HEK293T cells prepared using NETN lysis buffer. ***Antibodies:*** Affinity purified rabbit anti-CHD8 antibody (A301-224A lot 3) used for IP at 6 µg per reaction. CHD8 was also immunoprecipitated by a previous lot of this antibody (A301-224A lot 2) and another antibody against a different epitope of CHD8 (A301-225A). For blotting immunoprecipitated CHD8, A301-224A was used at 0.1 µg/ml. ***Detection:*** Chemiluminescence with an exposure time of 1 second.



Detection of human CHD8 by immunohistochemistry. *Sample:* FFPE section of human breast carcinoma. ***Antibody:*** Affinity purified rabbit anti-CHD8 (Cat. No. A301-224A Lot3) used at a dilution of 1:5,000 (0.2µg/ml). ***Detection:*** DAB

