

CHD7 Antibody

Rabbit Polyclonal

Antigen Affinity Purified

Protein ID NP_060250.2

Catalog No. A301-223A

GeneID 55636

Lot No. A301-223A-3



APPLICATIONS	WB, IP, ChIP-Seq
SPECIES REACTIVITY	Human
AMOUNT	100 µl
CONCENTRATION	200 µg/ml
STORAGE/SHELF LIFE	2 - 8° C / 1 year from date of receipt
PHYSICAL STATE	Liquid
BUFFER	Tris-buffered Saline containing 0.1% BSA and 0.09% Sodium Azide
ISOTYPE	IgG
ORIGIN	USA
PRODUCTION PROCEDURES	Antibody was affinity purified using an epitope specific to CHD7 immobilized on solid support.

The epitope recognized by A301-223A maps to a region between residue 2947 and 2997 of human chromodomain helicase DNA binding protein 7 using the numbering given in entry NP_060250.2 (GeneID 55636).

Immunoglobulin concentration was determined by extinction coefficient: absorbance at 280 nm of 1.4 equals 1.0 mg of IgG.

APPLICATIONS Centrifuge tube to remove product from lid. Optimal working dilutions should be determined experimentally by the investigator. Prepare working dilution immediately before use.

Western Blot 1:2,000 - 1:10,000

Immunoprecipitation 2 - 5 µg/mg lysate

ChIP-Seq ChIP-Seq 10 µg as per Ram O et al., Cell. 2011 Dec 23;147(7):1628-39. Previous lots of this antibody have performed in this application.

APPLICATION NOTES Western blot of immunoprecipitates performed using Normal Pig Serum (Cat. No. S100-020), Goat anti-Rabbit Light Chain HRP Conjugate (Cat. No. A120-113P) and 3-8% SDS-PAGE (link to IP-western blot protocol in Additional Info section below).

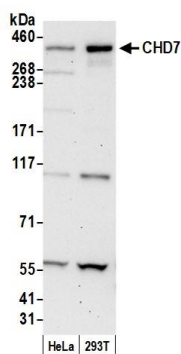
Western blot of lysates performed using standard western blot reagents and 3-8% SDS-PAGE.

ADDITIONAL INFO <https://www.bethyl.com/product/A301-223A>

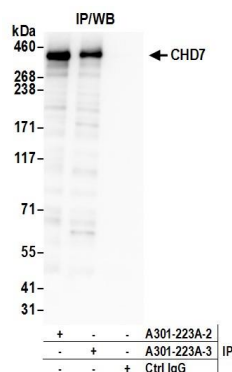
Use the link above to view SDS, a current list of citations, and other product specific information.

IP-western blot protocol: https://www.bethyl.com/content/protocol_IP_WB

This document certifies that this product has met all of the quality control standards defined by Bethyl Laboratories, Inc.
Eric McIntush, PhD | Chief Scientific Officer Date: June 21, 2019



Detection of human CHD7 by western blot. *Samples:* Whole cell lysate (50 µg) from HeLa and HEK293T cells prepared using NETN lysis buffer. *Antibody:* Affinity purified rabbit anti-CHD7 antibody A301-223A (lot A301-223A-3) used for WB at 0.1 µg/ml. *Detection:* Chemiluminescence with an exposure time of 30 seconds.



Detection of human CHD7 by western blot of immunoprecipitates. *Samples:* Whole cell lysate (1.0 mg per IP reaction; 20% of IP loaded) from HEK293T cells prepared using NETN lysis buffer. *Antibodies:* Affinity purified rabbit anti-CHD7 antibody A301-223A (lot A301-223A-3) used for IP at 3 µg per reaction. CHD7 was also immunoprecipitated by a previous lot of this antibody (lot A301-223A-2). For blotting immunoprecipitated CHD7, A301-223A was used at 0.4 µg/ml. *Detection:* Chemiluminescence with an exposure time of 30 seconds.