

CHD6 Antibody

Rabbit Polyclonal

Antigen Affinity Purified

Protein ID NP_115597.3

Catalog No. A301-221A

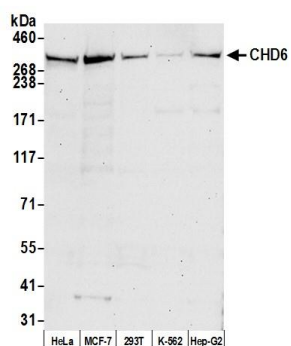
GeneID 84181

Lot No. A301-221A-2

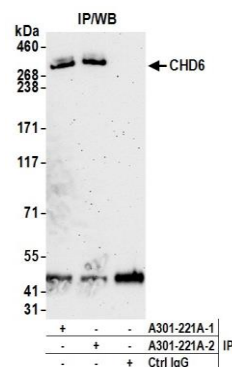


APPLICATIONS	WB, IP
SPECIES REACTIVITY	Human
AMOUNT	100 µl
CONCENTRATION	1000 µg/ml
STORAGE/SHELF LIFE	2 – 8° C / 1 year from date of receipt
PHYSICAL STATE	Liquid
BUFFER	Tris-citrate/phosphate buffer, pH 7 to 8 containing 0.09% Sodium Azide
ISOTYPE	IgG
ORIGIN	USA
PRODUCTION PROCEDURES	<p>Antibody was affinity purified using an epitope specific to CHD6 immobilized on solid support.</p> <p>The epitope recognized by A301-221A maps to a region between residue 2665 and 2715 of human chromodomain helicase DNA binding protein 6 using the numbering given in entry NP_115597.3 (GeneID 84181).</p> <p>Immunoglobulin concentration was determined by extinction coefficient: absorbance at 280 nm of 1.4 equals 1.0 mg of IgG.</p>
APPLICATIONS	<p>Centrifuge tube to remove product from lid. Optimal working dilutions should be determined experimentally by the investigator. Prepare working dilution immediately before use.</p> <p>Western Blot 1:500 – 1:2,500</p> <p>Immunoprecipitation 2 – 10 µg/mg lysate</p>
APPLICATION NOTES	<p>Western blot of immunoprecipitates performed using Normal Pig Serum (Cat. No. S100-020), Goat anti-Rabbit Light Chain HRP Conjugate (Cat. No. A120-113P) and 3-8% SDS-PAGE (link to IP-western blot protocol in Additional Info section below).</p> <p>Western blot of lysates performed using standard western blot reagents and 3-8% SDS-PAGE.</p>
ADDITIONAL INFO	<p>https://www.bethyl.com/product/A301-221A</p> <p>Use the link above to view SDS, a current list of citations, and other product specific information. IP-western blot protocol https://www.bethyl.com/content/protocol_IP_WB</p>

This document certifies that this product has met all of the quality control standards defined by Bethyl Laboratories, Inc.
Eric McIntush, PhD | Chief Scientific Officer Date: August 28, 2019



Detection of human CHD6 by western blot. *Samples:* Whole cell lysate (50 µg) from HeLa, MCF-7, HEK293T, K-562, and Hep-G2 cells prepared using NETN lysis buffer. *Antibody:* Affinity purified rabbit anti-CHD6 antibody A301-221A (lot A301-221A-2) used for WB at 1 µg/ml. *Detection:* Chemiluminescence with an exposure time of 30 seconds.



Detection of human CHD6 by western blot of immunoprecipitates. *Samples:* Whole cell lysate (1.0 mg per IP reaction; 20% of IP loaded) from MCF-7 cells prepared using NETN lysis buffer. *Antibodies:* Affinity purified rabbit anti-CHD6 antibody A301-221A (lot A301-221A-2) used for IP at 6 µg per reaction. CHD6 was also immunoprecipitated by a previous lot of this antibody (lot A301-221A-1). For blotting immunoprecipitated CHD6, A301-221A was used at 0.4 µg/ml. *Detection:* Chemiluminescence with an exposure time of 30 seconds.