

TRIM3/BERP Antibody

Rabbit Polyclonal

Antigen Affinity Purified

Protein ID NP_006449.2

Catalog No. A301-207A

GeneID 10612

Lot No. A301-207A-1



APPLICATIONS	IP, IHC
SPECIES REACTIVITY	Human
PRESUMED REACTIVITY	Based on 100% sequence identity, this antibody is predicted to react with Mouse and Rat
AMOUNT	100 µl
CONCENTRATION	1000 µg/ml
STORAGE/SHELF LIFE	2 - 8° C / 1 year from date of receipt
PHYSICAL STATE	Liquid
BUFFER	Tris-citrate/phosphate buffer, pH 7 to 8 containing 0.09% Sodium Azide
ISOTYPE	IgG
ORIGIN	USA
PRODUCTION PROCEDURES	Antibody was affinity purified using an epitope specific to TRIM3/BERP immobilized on solid support.

The epitope recognized by A301-207A maps to a region between residue 1 and 50 of human tripartite motif-containing 3 (brain expressed ring finger protein) using the numbering given in entry NP_006449.2 (GeneID 10612).

Immunoglobulin concentration was determined by extinction coefficient: absorbance at 280 nm of 1.4 equals 1.0 mg of IgG.

APPLICATIONS Centrifuge tube to remove product from lid. Optimal working dilutions should be determined experimentally by the investigator. Prepare working dilution immediately before use.

Western Blot Not recommended

Immunoprecipitation 2 - 5 µg/mg lysate

Immunohistochemistry 1:500 - 1:2,000. Epitope retrieval with citrate buffer pH 6.0 is recommended for FFPE tissue sections.

APPLICATION NOTES Western blot of immunoprecipitates performed using Normal Pig Serum (Cat. No. S100-020), Goat anti-Rabbit Light Chain HRP Conjugate (Cat. No. A120-113P) and 4-8% SDS-PAGE (link to IP-western blot protocol in Additional Info section below).

IHC HUMAN CONTROLS Colon Carcinoma, Ovarian Carcinoma, Testis

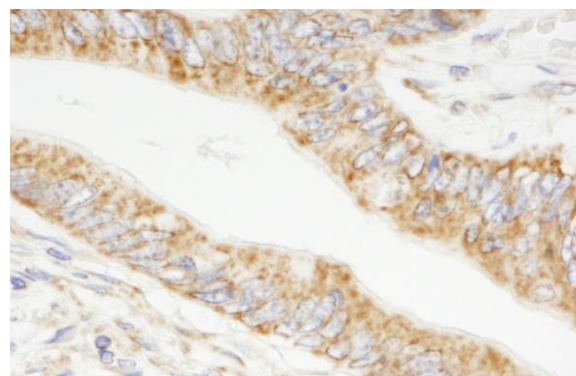
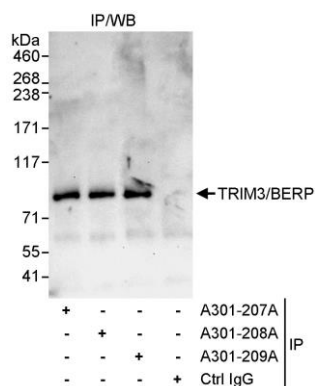
ADDITIONAL INFO <https://www.bethyl.com/product/A301-207A>

Use the link above to view SDS, a current list of citations, and other product specific information.

IP-western blot protocol: https://www.bethyl.com/content/protocol_IP_WB

This document certifies that this product has met all of the quality control standards defined by Bethyl Laboratories, Inc.
Eric McIntush, PhD | Chief Scientific Officer

Date: June 21, 2019



Detection of human TRIM3/BERP by western blot of immunoprecipitates. *Samples:* Whole cell lysate (1 mg for IP, 20% of IP loaded) from HeLa cells. *Antibodies:* Affinity purified rabbit anti-TRIM3/BERP antibody A301-207A used for IP at 3 µg/mg lysate. TRIM3/BERP was also immunoprecipitated by rabbit anti-TRIM3/BERP antibodies A301-208A and A301-209A, which recognize downstream epitopes. For blotting immunoprecipitated TRIM3/BERP, A301-209A was used at 1 µg/ml. *Detection:* Chemiluminescence with an exposure time of 30 seconds.

Detection of human TRIM3/BERP by immunohistochemistry. *Sample:* FFPE section of human colon carcinoma. *Antibody:* Affinity purified rabbit anti-TRIM3/BERP (Cat. No. A301-207A Lot1) used at a dilution of 1:1,000 (1 µg/ml). *Detection:* DAB