

RbBP4 Antibody

Rabbit Polyclonal

Antigen Affinity Purified

Protein ID CAA52321.1

Catalog No. A301-206A

GeneID 5928

Lot No. A301-206A-1



APPLICATIONS	WB, IP, IHC
SPECIES REACTIVITY	Human, Mouse
PRESUMED REACTIVITY	Based on 100% sequence identity, this antibody is predicted to react with Zebrafish, X. laevis, X. tropicalis, Chicken, Bovine and Orangutan
AMOUNT	100 µl
CONCENTRATION	200 µg/ml
STORAGE/SHELF LIFE	2 - 8° C / 1 year from date of receipt
PHYSICAL STATE	Liquid
BUFFER	Tris-buffered Saline containing 0.1% BSA and 0.09% Sodium Azide
ISOTYPE	IgG
ORIGIN	USA
PRODUCTION PROCEDURES	Antibody was affinity purified using an epitope specific to RbBP4 immobilized on solid support.

The epitope recognized by A301-206A maps to a region between residue 1 and 50 of human retinoblastoma binding protein 4 (retinoblastoma-binding protein p48) using the numbering given in entry CAA52321.1 (GeneID 5928).

Immunoglobulin concentration was determined by extinction coefficient: absorbance at 280 nm of 1.4 equals 1.0 mg of IgG.

APPLICATIONS Centrifuge tube to remove product from lid. Optimal working dilutions should be determined experimentally by the investigator. Prepare working dilution immediately before use.

Western Blot 1:2,000 - 1:10,000

Immunoprecipitation 2 - 5 µg/mg lysate

Immunohistochemistry 1:200 - 1:1,000. Epitope retrieval with citrate buffer pH 6.0 is recommended for FFPE tissue sections.

APPLICATION NOTES Western blot of immunoprecipitates performed using Normal Pig Serum (Cat. No. S100-020), Goat anti-Rabbit Light Chain HRP Conjugate (Cat. No. A120-113P) and 4-20% SDS-PAGE (link to IP-western blot protocol in Additional Info section below).

Western blot of lysates performed using standard western blot reagents and 4-20% SDS-PAGE.

IHC HUMAN CONTROLS Breast Carcinoma, Ewing Sarcoma, Ovarian Carcinoma, Prostate Carcinoma

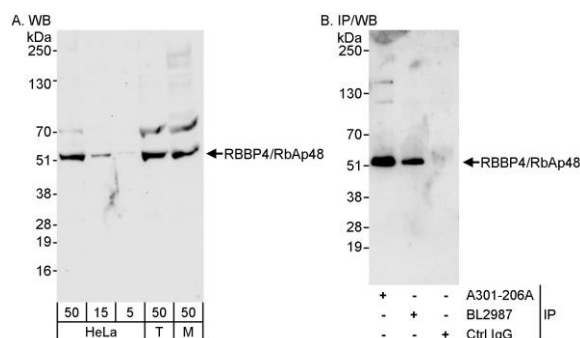
IHC MOUSE CONTROLS Colon Carcinoma CT26, Renal Cell Carcinoma, Skin, Teratoma

ADDITIONAL INFO <https://www.bethyl.com/product/A301-206A>

Use the link above to view SDS, a current list of citations, and other product specific information.

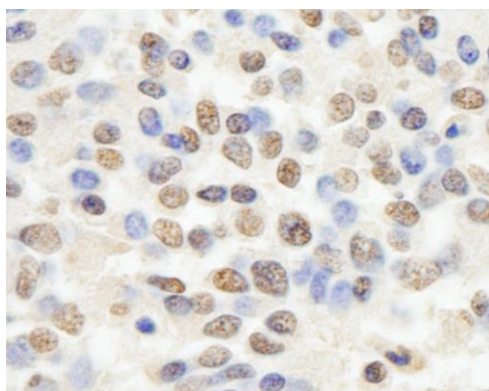
IP-western blot protocol: https://www.bethyl.com/content/protocol_IP_WB

This document certifies that this product has met all of the quality control standards defined by Bethyl Laboratories, Inc.
Eric McIntush, PhD | Chief Scientific Officer Date: June 21, 2019



Detection of human and mouse RBBP4/RbAp48 by western blot (h&m) and immunoprecipitation (h).

Samples: Whole cell lysate from HeLa (5, 15, and 50 μ g for WB; 1 mg for IP, 20% of IP loaded), HEK293T (T; 50 μ g), and mouse NIH 3T3 (M; 50 μ g) cells. *Antibodies:* Affinity purified rabbit anti-RBBP4/RbAp48 antibody A301-206A used for WB at 0.04 μ g/ml (A) and 0.1 μ g/ml (B) and used for IP at 3 μ g/mg lysate. RBBP4/RbAp48 was also immunoprecipitated by rabbit anti-RBBP4/RbAp48 antibody BL2987, which recognizes a downstream epitope. *Detection:* Chemiluminescence with exposure times of 30 seconds (A) and 10 seconds (B).



Detection of human RBBP4/RbAp48 by immunohistochemistry. *Sample:* FFPE section of human Ewing sarcoma. *Antibody:* Affinity purified rabbit anti-RBBP4/RbAp48 (Cat. No. A301-206A Lot1) used at a dilution of 1:200 (1 μ g/ml). *Detection:* DAB