

AktS1 / PRAS40 Antibody

Rabbit Polyclonal

Antigen Affinity Purified

Protein ID NP_115751.1

Catalog No. A301-202A

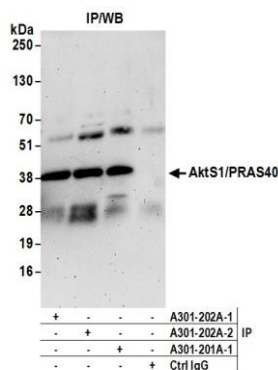
GeneID 84335

Lot No. A301-202A-2



APPLICATIONS	IP
SPECIES REACTIVITY	Human
PRESUMED REACTIVITY	Based on 100% sequence identity, this antibody is predicted to react with Mouse
AMOUNT	100 µl
CONCENTRATION	1000 µg/ml
STORAGE/SHELF LIFE	2 - 8° C / 1 year from date of receipt
PHYSICAL STATE	Liquid
BUFFER	Tris-citrate/phosphate buffer, pH 7 to 8 containing 0.09% Sodium Azide
ISOTYPE	IgG
ORIGIN	USA
PRODUCTION PROCEDURES	<p>Antibody was affinity purified using an epitope specific to AktS1 / PRAS40 immobilized on solid support.</p> <p>The epitope recognized by A301-202A maps to a region between residue 225 and 256 of human AKT1 substrate 1 (proline-rich Akt substrate, 40 kDa) using the numbering given in entry NP_115751.1 (GeneID 84335).</p> <p>Immunoglobulin concentration was determined by extinction coefficient: absorbance at 280 nm of 1.4 equals 1.0 mg of IgG.</p>
APPLICATIONS	<p>Centrifuge tube to remove product from lid. Optimal working dilutions should be determined experimentally by the investigator. Prepare working dilution immediately before use.</p> <p>Western Blot Not recommended. Use rabbit anti-AktS1 / PRAS40 antibody A301-201A.</p> <p>Immunoprecipitation 2 - 10 µg/mg lysate</p>
APPLICATION NOTES	Western blot of immunoprecipitates performed using Normal Pig Serum (Cat. No. S100-020), Goat anti-Rabbit Light Chain HRP Conjugate (Cat. No. A120-113P) and 4-20% SDS-PAGE (link to IP-western blot protocol in Additional Info section below).
ADDITIONAL INFO	<p>https://www.bethyl.com/product/A301-202A</p> <p>Use the link above to view SDS, a current list of citations, and other product specific information.</p> <p>IP-western blot protocol: https://www.bethyl.com/content/protocol_IP_WB</p>

This document certifies that this product has met all of the quality control standards defined by Bethyl Laboratories, Inc.
Eric McIntush, PhD | Chief Scientific Officer Date: June 21, 2019



Detection of human AktS1/PRAS40 by western blot of immunoprecipitates. *Samples:* Whole cell lysate (0.5 or 1.0 mg per IP reaction; 20% of IP loaded) from HEK293T cells prepared using NETN lysis buffer. *Antibody:* Affinity purified rabbit anti-AktS1/PRAS40 antibody A301-202A (lot A301-202A-2) used for IP at 6 µg per reaction. AktS1/PRAS40 was also immunoprecipitated by a previous lot of this antibody (A301-202A-1) and rabbit anti-AktS1/PRAS40 antibody A301-201A. For blotting immunoprecipitated AktS1/PRAS40, A301-201A was used at 1 µg/ml. *Detection:* Chemiluminescence with an exposure time of 3 minutes.